

**Capital Improvements Authority
AGENDA**

**Monday, September 10, 2018
4:00 PM**

**Community Center
500 Tiger Drive, Excelsior Springs, MO 64024**

NOTICE OF OPEN MEETING

Notice is hereby given that the **Excelsior Springs Capital Improvements Authority** will conduct a meeting at 4:00 PM on Monday, September 10, 2018 in the Hall of Waters Building, Council Chambers, 201 E. Broadway, Excelsior Springs, MO 64024.

AGENDA

September 10, 2018

1. Roll Call
2. Approval: Minutes of Meeting - July 9, 2018
3. Approval: Budget Spreadsheets - June, July, August 2018
4. Approval: Trans Trust Financials - June, July, August 2018
5. Approval: Hall of Waters Maintenance Allocation
6. Approval: Request for Blight Funds
7. Approval: Roof Replacement Request
8. Approval: Funding Request for MARRS Radio Tower
9. Comments
10. Adjourn

Representatives of the news media may obtain copies of this notice by contacting the City Manager's Office, 201 E. Broadway, Excelsior Springs, MO 64024 (816)630-0752.

Date and time posted: Thursday, September 6, 2018 at 3:30pm

Capital Improvements Authority
Minutes of Regular Meeting
July 9, 2018 at 4:00pm at the Community Center, 500 Tiger Drive

1. Roll Call:

Present: Mike Edwards, Jason Cole, Estella Morrison, Tray Harkins, Reggie St. John, and Mayor Brad Eales.

Absent: Mary Lou Greim.

Also Present: Public Works Director Chad Birdsong, Parks and Recreation Director Nate Williams, Fire Chief Paul Tribble, Chief of Police Clint Reno, Director of Economic Development Melinda Mehaffy, Project Manager Larry Murry, City Manager Molly McGovern, Building Superintendent TR Kennedy, Director of Administrative Services Steve Marriott, Community Center Director Jesse Hall and Authority Secretary Susan Conyers.

- 2. Approval of Minutes of May 14, 2018:** Tray Harkins motioned to approve the May 14, 2018 meeting minutes; Mike Edwards seconded. Motion approved.
- 3. Approval of Budget Spreadsheets – May 2018:** Steve Marriott, Director of Administrative Services briefed the Authority of the budget spreadsheets from May of this year. Mike Edwards motioned to approve the May 2018 spreadsheet totals as presented. Reggie St. John seconded. Motion approved.
- 4. Approval of Trans Trust Financials – May 2018:** Chad Birdsong, Director of Public Works, briefed the Authority of the Financial Statements for Transportation Trust from May of this year. Tray Harkins motioned to approve the Trans Trust Financials of May 2018 as presented. Reggie St. John seconded. Motion approved.
- 5. Approval – Request to Replenish Funds:** Chad Birdsong, Director of Public Works, briefed the Authority of the request to replenish funds in the Miscellaneous Concrete Repair Fund, Snow Removal Fund, and Infrastructure Fund, as well as bus purchase match money for the Transportation Department. The request is to allocate \$139,300.71 into the Miscellaneous Concrete Repair Fund, \$8,489.73 into the Snow Removal Fund, \$71,185.58 into the Infrastructure Fund, and \$13,907.88 match money for a bus purchase for the Transportation Department for a total of \$232,883.90. Reggie St. John motioned to approve the request of \$232,883.90 be allocated into the individual funds. Mike Edwards seconded. Motion approved.
- 6. Discussion – Roof Projects:** Molly McGovern, City Manager discussed that the City is taking bids on roof projects for three buildings owned by the City. Those roof projects will be for 218 South Street (Old Bank Building), 112 S. Thompson (Old Community Center), and 201 E. Broadway (Hall of Waters). Larry and TR are present to answer any questions.
- 7. Comments:** Police Chief Reno updated the Authority on the MARRS project and that he is waiting on a report on the tower. Chad Birdsong, Director of Public Works discussed blighted properties, drainage study, Golf Course Clubhouse, Golf Course Pavilion, and Superior Well Pagoda. The Crown Hill Mausoleum was mentioned and isn't expected to be in the 5 year plan of projects. Concrete sidewalks were also discussed.
- 8. Adjourn:** The meeting adjourned at 4:28 pm. The next meeting is scheduled for Monday, August 13, 2018 at 4:00 pm.

Susan Conyers, Authority Secretary

CAPITAL IMPROVEMENTS SALES TAX
Transactions for June 2018

Beginning Balance:

Pooled Cash	1,596,243.30	
Investments	1,305,588.24	
Payables	<u>260.04</u>	
Available Beginning Balance		2,902,091.58

Revenues:

	<u>June</u>	
City Sales Tax	84,209.65	
TIF Allocations	(1,950.10)	
City Use Tax	3,792.19	
Interest Income	1,211.02	
Investment Interest	-	
Sale of properties (DEMO)	<u>-</u>	
Total Revenue	87,262.76	87,262.76

Expenditures:

Bank Charges	(120.63)	
Professional Services		Sidewalk replacement program
Labor and materials		Superior Well Pagoda
Labor and materials	(2,100.00)	Bank Building Roof Hatch
Materials		Building maintenance
Professional Services		Cemetery Mausoleum
Professional Services		Hall of Waters HVAC Engineering
Professional Services	(21,981.89)	Clubhouse
Professional Services		Hall of Waters Drainage Study
Professional Services		MARS Radio System Upgrade
Labor and materials		Technology upgrade project
Property Purchases/Demos	(1,494.68)	Blighted Property Fund
Transfers		
Transfers - General Fund	(860.38)	Indirect cost allocation
Transfers - Pollution Control	-	Sewer Extensions - Seybold
Transfers - Pollution Control	-	Sewer Extensions - Lake Maurer
Transfers - Pollution Control	<u>(297,083.19)</u>	Sewer Extensions - Highway 92
Total Expenditures		<u>(323,640.77)</u>

Ending Balance **2,665,713.57**

Allocation of ending balance:

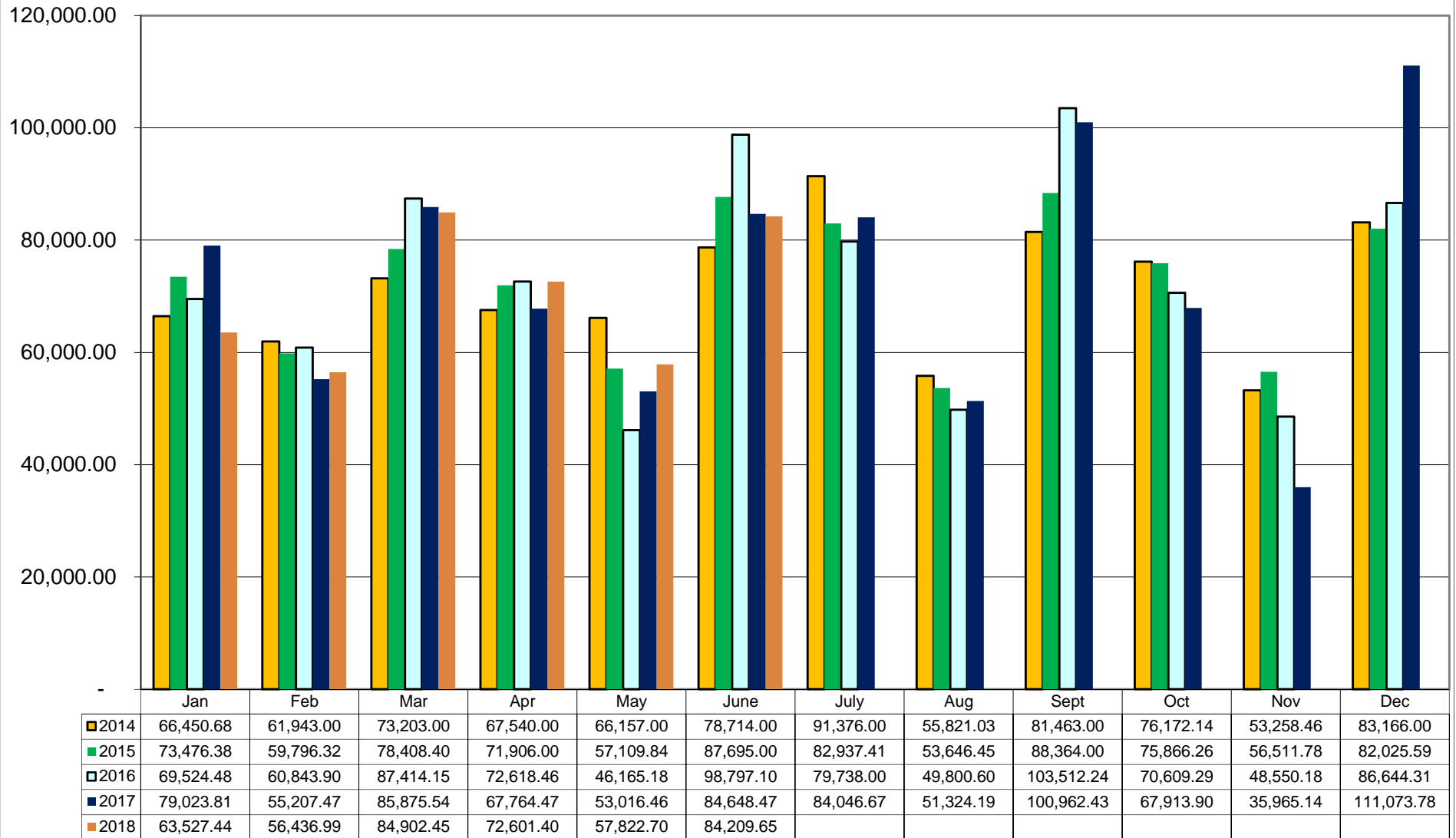
Pooled Cash	1,359,777.33
Investments	1,305,588.24
Payables	<u>348.00</u>
Total	<u>2,665,713.57</u>

Committed Funds:

Maintenance Fund City Wide	(1,721.35)	
Concrete Sidewalk Fund	(72,352.28)	
Blighted Property Fund	(61,017.02)	
Storm Sirens For Fire Dept	(8,523.48)	
Technology upgrades	(26,296.68)	
Crown Hill Mausoleum	(40,537.00)	
Hall of Waters Drainage Study	(56,836.26)	
Golf Clubhouse/Subdivision	(739,781.33)	
Superior Well Pagoda	(113,954.99)	
Bank Building Roof Hatch	-	
MARRS System	(499,531.50)	
Sewer Extensions:	<u>(291,015.37)</u>	
Total Committed Funds		<u>(1,921,122.66)</u>

Available Cash Balance **744,590.91**

Gross Capital Improvement Sales Tax Receipts



City of Excelsior Springs
Gross Capital Improvement Sales Tax by Month - Cash Basis

	2014	2015	2016	2017	2018
Jan	66,450.68	73,476.38	69,524.48	79,023.81	63,527.44
Feb	61,943.00	59,796.32	60,843.90	55,207.47	56,436.99
Mar	73,203.00	78,408.40	87,414.15	85,875.54	84,902.45
Apr	67,540.00	71,906.00	72,618.46	67,764.47	72,601.40
May	66,157.00	57,109.84	46,165.18	53,016.46	57,822.70
June	78,714.00	87,695.00	98,797.10	84,648.47	84,209.65
July	91,376.00	82,937.41	79,738.00	84,046.67	
Aug	55,821.03	53,646.45	49,800.60	51,324.19	
Sept	81,463.00	88,364.00	103,512.24	100,962.43	
Oct	76,172.14	75,866.26	70,609.29	67,913.90	
Nov	53,258.46	56,511.78	48,550.18	35,965.14	
Dec	83,166.00	82,025.59	86,644.31	111,073.78	
Annual Total	855,264.31	867,743.43	874,217.89	876,822.33	419,500.63

Comparison of Revenues thru June:

	2016	2017	2018	Y-T-Y Change
Net sales tax	349,028.69	342,499.63	405,404.63	62,905.00
Use tax	26,222.79	33,658.01	30,953.32	(2,704.69)
Interest on bank accounts	1,622.13	7,555.31	6,214.07	(1,341.24)
Interest on investments	6,132.99	8,419.96	9,331.20	911.24
	383,006.60	392,132.91	451,903.22	59,770.31
Add TIF Surplus	135,998.39	142,011.20	141,668.80	(342.40)
Total	519,004.99	534,144.11	593,572.02	59,427.91

CAPITAL IMPROVEMENTS SALES TAX
Transactions for July 2018

Beginning Balance:

Pooled Cash	1,359,777.33	
Investments	1,305,588.24	
Payables	<u>348.00</u>	
Available Beginning Balance		2,665,713.57

Revenues:

	<u>July</u>	
City Sales Tax	86,393.34	
TIF Allocations	(1,557.58)	
City Use Tax	8,315.88	
Interest Income	1,072.10	
Investment Interest	1,833.15	
Sale of properties (DEMO)	<u>-</u>	
Total Revenue	96,056.89	96,056.89

Expenditures:

Bank Charges	(121.74)	
Professional Services		Sidewalk replacement program
Labor and materials		Superior Well Pagoda
Labor and materials		Bank Building Roof Hatch
Materials		Building maintenance
Professional Services		Cemetery Mausoleum
Professional Services		Hall of Waters HVAC Engineering
Professional Services	(57,236.23)	Clubhouse
Professional Services	(7,043.81)	Hall of Waters Drainage Study
Professional Services		MARS Radio System Upgrade
Labor and materials	(2,807.50)	Technology upgrade project
Property Purchases/Demos	(1,540.00)	Blighted Property Fund
Transfers		
Transfers - General Fund	(860.38)	Indirect cost allocation
Transfers - Pollution Control	-	Sewer Extensions - Seybold
Transfers - Pollution Control	-	Sewer Extensions - Lake Maurer
Transfers - Pollution Control		<u>Sewer Extensions - Highway 92</u>
Total Expenditures		<u>(69,609.66)</u>

Ending Balance **2,692,160.80**

Allocation of ending balance:

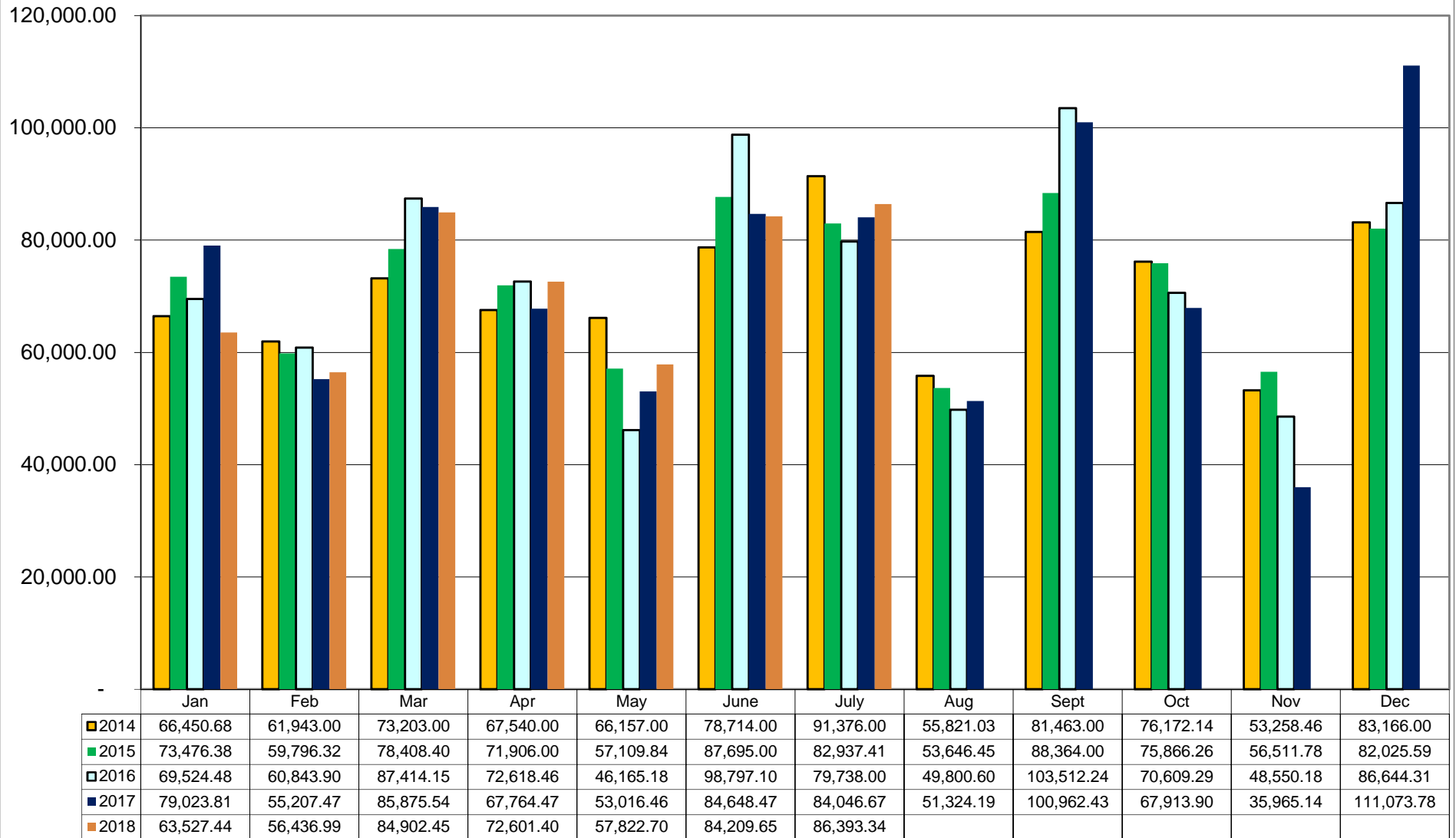
Pooled Cash	1,386,333.71
Investments	1,305,588.24
Payables	<u>238.85</u>
Total	<u>2,692,160.80</u>

Committed Funds:

Maintenance Fund City Wide	(1,721.35)	
Concrete Sidewalk Fund	(72,352.28)	
Blighted Property Fund	(59,477.02)	
Storm Sirens For Fire Dept	(8,523.48)	
Technology upgrades	(23,489.18)	
Crown Hill Mausoleum	(40,537.00)	
Hall of Waters Drainage Study	(49,792.45)	
Golf Clubhouse/Subdivision	(682,545.10)	
Superior Well Pagoda	(113,954.99)	
	(9,555.40)	
MARRS System	(499,531.50)	
Sewer Extensions:	<u>(588,098.56)</u>	
Total Committed Funds		<u>(2,149,578.31)</u>

Available Cash Balance **542,582.49**

Gross Capital Improvement Sales Tax Receipts



City of Excelsior Springs
Gross Capital Improvement Sales Tax by Month - Cash Basis

	2014	2015	2016	2017	2018
Jan	66,450.68	73,476.38	69,524.48	79,023.81	63,527.44
Feb	61,943.00	59,796.32	60,843.90	55,207.47	56,436.99
Mar	73,203.00	78,408.40	87,414.15	85,875.54	84,902.45
Apr	67,540.00	71,906.00	72,618.46	67,764.47	72,601.40
May	66,157.00	57,109.84	46,165.18	53,016.46	57,822.70
June	78,714.00	87,695.00	98,797.10	84,648.47	84,209.65
July	91,376.00	82,937.41	79,738.00	84,046.67	86,393.34
Aug	55,821.03	53,646.45	49,800.60	51,324.19	
Sept	81,463.00	88,364.00	103,512.24	100,962.43	
Oct	76,172.14	75,866.26	70,609.29	67,913.90	
Nov	53,258.46	56,511.78	48,550.18	35,965.14	
Dec	83,166.00	82,025.59	86,644.31	111,073.78	
Annual Total	855,264.31	867,743.43	874,217.89	876,822.33	505,893.97

Comparison of Revenues thru July:

	2016	2017	2018	Y-T-Y Change
Net sales tax	414,548.92	412,966.90	490,240.39	77,273.49
Use tax	30,257.16	39,422.54	39,269.20	(153.34)
Interest on bank accounts	1,812.69	8,961.38	7,286.17	(1,675.21)
Interest on investments	6,467.26	9,407.50	11,164.35	1,756.85
	453,086.03	470,758.32	547,960.11	77,201.79
Add TIF Surplus	135,998.39	142,011.20	141,668.80	(342.40)
Total	589,084.42	612,769.52	689,628.91	76,859.39

CAPITAL IMPROVEMENTS SALES TAX
Transactions for August 2018

Beginning Balance:

Pooled Cash	1,386,333.71	
Investments	1,305,588.24	
Payables	<u>238.85</u>	
Available Beginning Balance		2,692,160.80

Revenues:

	<u>August</u>	
City Sales Tax	63,481.42	
TIF Allocations	(878.23)	
City Use Tax	7,061.83	
Interest Income	1,040.85	
Investment Interest		
Sale of properties (DEMO)		
	<u>70,705.87</u>	
Total Revenue		70,705.87

Expenditures:

Bank Charges	(104.19)	
Professional Services	(81,363.68)	Clubhouse
Labor and materials	(2,382.41)	Technology upgrade project
Property Purchases/Demos	(26,816.51)	Blighted Property Fund
Transfers		
Transfers - General Fund	(860.38)	Indirect cost allocation
Transfers - Pollution Control	-	Sewer Extensions - Seybold
Transfers - Pollution Control	-	Sewer Extensions - Lake Maurer
Transfers - Pollution Control	<u>(94,542.65)</u>	Sewer Extensions - Highway 92
Total Expenditures		<u>(206,069.82)</u>

Ending Balance **2,556,796.85**

Allocation of ending balance:

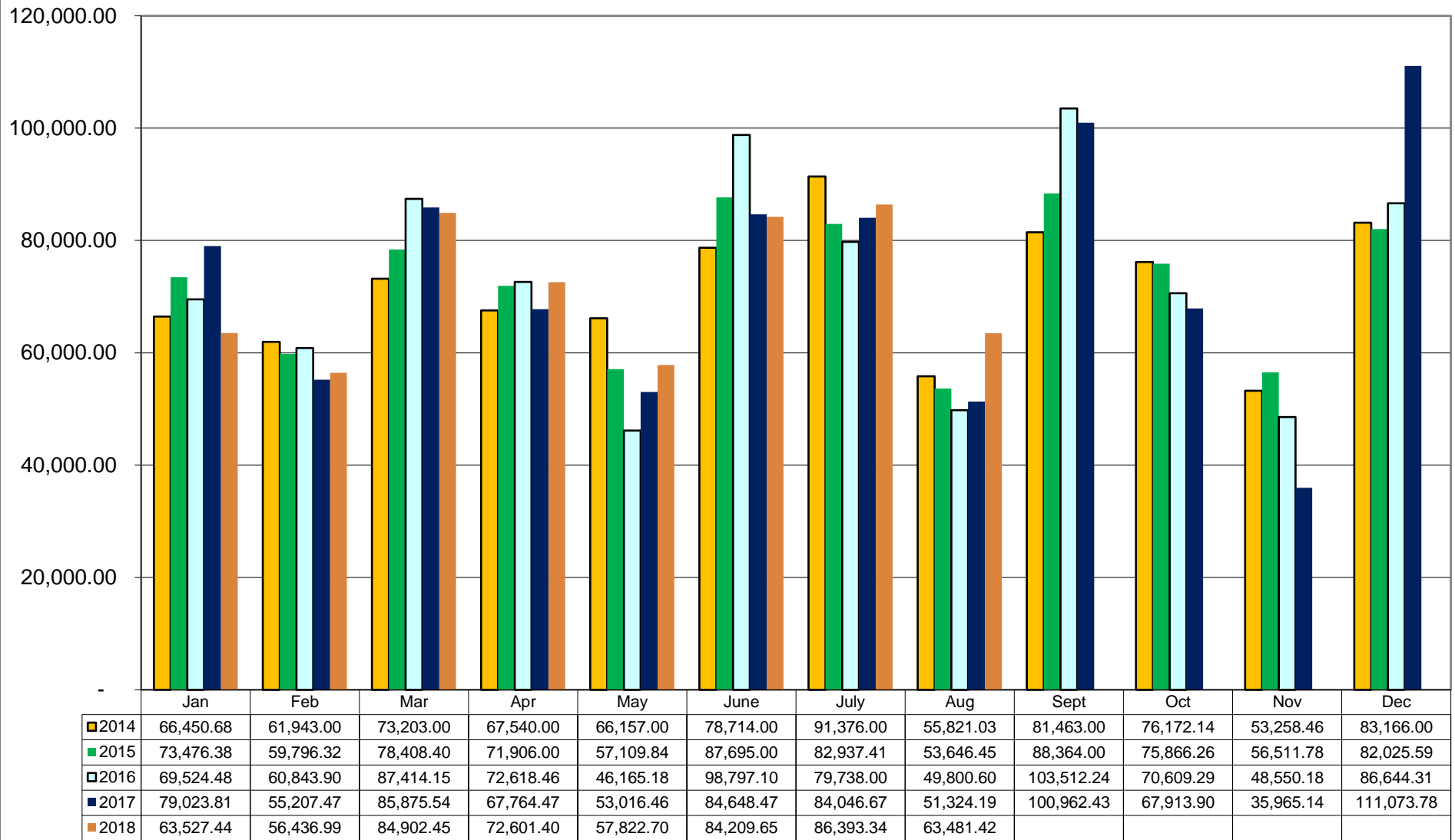
Pooled Cash	1,250,860.61
Investments	1,305,588.24
Payables	<u>348.00</u>
Total	<u>2,556,796.85</u>

Committed Funds:

Maintenance Fund City Wide	(1,721.35)	
Concrete Sidewalk Fund	(72,352.28)	
Blighted Property Fund	(32,660.51)	
Storm Sirens For Fire Dept	(8,523.48)	
Technology upgrades	(21,106.77)	
Crown Hill Mausoleum	(40,537.00)	
Hall of Waters Drainage Study	(49,792.45)	
Golf Clubhouse/Subdivision	(601,181.42)	
Superior Well Pagoda	(113,954.99)	
MARRS System	(499,531.50)	
Sewer Extensions:	<u>(396,472.72)</u>	
Total Committed Funds		<u>(1,837,834.47)</u>

Available Cash Balance **718,962.38**

Gross Capital Improvement Sales Tax Receipts



City of Excelsior Springs
Gross Capital Improvement Sales Tax by Month - Cash Basis

	2014	2015	2016	2017	2018
Jan	66,450.68	73,476.38	69,524.48	79,023.81	63,527.44
Feb	61,943.00	59,796.32	60,843.90	55,207.47	56,436.99
Mar	73,203.00	78,408.40	87,414.15	85,875.54	84,902.45
Apr	67,540.00	71,906.00	72,618.46	67,764.47	72,601.40
May	66,157.00	57,109.84	46,165.18	53,016.46	57,822.70
June	78,714.00	87,695.00	98,797.10	84,648.47	84,209.65
July	91,376.00	82,937.41	79,738.00	84,046.67	86,393.34
Aug	55,821.03	53,646.45	49,800.60	51,324.19	63,481.42
Sept	81,463.00	88,364.00	103,512.24	100,962.43	
Oct	76,172.14	75,866.26	70,609.29	67,913.90	
Nov	53,258.46	56,511.78	48,550.18	35,965.14	
Dec	83,166.00	82,025.59	86,644.31	111,073.78	
Annual Total	855,264.31	867,743.43	874,217.89	876,822.33	569,375.39

Comparison of Revenues thru August:

	2016	2017	2018	Y-T-Y Change
Net sales tax	451,970.65	451,480.29	552,843.58	101,363.29
Use tax	34,666.42	43,179.58	46,331.03	3,151.45
Interest on bank accounts	2,016.38	10,072.53	8,327.02	(1,745.51)
Interest on investments	8,148.22	11,359.06	11,164.35	(194.71)
	496,801.67	516,091.46	618,665.98	102,574.52
Add TIF Surplus	135,998.39	142,011.20	141,668.80	(342.40)
Total	632,800.06	658,102.66	760,334.78	102,232.12

TRANSPORTATION TRUST SALES TAX
Transactions for June 2018

Beginning Balance		\$1,542,093.27
Balance includes \$500,000 in investments		
Total Cash		\$1,542,093.27
Revenues:	Year to Date	
City Sales Tax	\$80,793.44	
City Use Tax	\$3,792.19	
TIF Allocation Vintage	-\$1,493.21	
TIF Vintage II	-\$456.89	
Investment Interest		
Interest Income	\$560.83	
Total Revenue		\$83,196.36
Disbursements:		
2018 Overlay	-\$6,400.00	
Bus Purchase	-\$13,907.88	
Bank Charges	-\$60.11	
Misc Concrete repairs	-\$78,952.50	
Infrastructure repairs	-\$36,530.73	
Transfers		
Operating Transfers - Finance Dept. (-\$250.00	
Operating Transfers - Gen Fund		
Operating Transfers - Const Services		
Operating Transfers - Comm Development		
Total Expense		-\$136,101.22
Ending Balance		\$1,489,188.41
Committed Funds		
2018 Overlay	-\$580,800.00	
Snow Removal	-\$26,510.27	
Misc Concrete Repairs	-\$10,699.29	
Bus Purchase	-\$1,092.12	
Infrastructure	-\$28,814.42	
Total Committed Funds		-\$647,916.10
Total Spendable Cash Balance		\$841,272.31

TRANSPORTATION TRUST SALES TAX**Transactions for July 2018**

Beginning Balance		\$1,489,188.41
-------------------	--	----------------

Balance includes \$500,000 in investments		
---	--	--

Total Cash		\$1,489,188.41
-------------------	--	-----------------------

Revenues:Year to Date

City Sales Tax	\$81,317.10	
----------------	-------------	--

City Use Tax	\$8,315.88	
--------------	------------	--

TIF Allocation Vintage	-\$1,270.96	
------------------------	-------------	--

TIF: Vintage II	-\$229.23	
-----------------	-----------	--

TIF: Golf	-\$57.39	
-----------	----------	--

Interest Income	\$654.32	
-----------------	----------	--

Investment Interest	\$772.91	
---------------------	----------	--

Total Revenue		\$89,502.63
----------------------	--	--------------------

Disbursements:

Bank Charges	-\$60.66	
--------------	----------	--

Misc Concrete repairs	-\$929.05	
-----------------------	-----------	--

Infrastructure repairs	-\$4,396.87	
------------------------	-------------	--

TT2018 Overlay	-\$6,400.00	
----------------	-------------	--

legal fee	-\$37.76	
-----------	----------	--

Operating Transfers - Finance Dept. (-\$250.00	
---------------------------------------	-----------	--

Operating Transfers - Gen Fund		
--------------------------------	--	--

Operating Transfers - Const Services		
--------------------------------------	--	--

Operating Transfers - Comm Development		
--	--	--

Total Expense		-\$12,074.34
----------------------	--	---------------------

Ending Balance		\$1,566,616.70
-----------------------	--	-----------------------

Committed Funds *Approved 7/2/18 Meeting*

2018 Overlay	-\$580,800.00	
--------------	---------------	--

Snow Removal	-\$35,000.00	
--------------	--------------	--

Misc Concrete Repairs	-\$149,070.95	
-----------------------	---------------	--

Bus Purchase	-\$15,000.00	
--------------	--------------	--

Infrastructure	-\$95,603.13	
----------------	--------------	--

Total Committed Funds		-\$875,474.08
------------------------------	--	----------------------

Total Spendable Cash Balance		\$691,142.62
-------------------------------------	--	---------------------

TRANSPORTATION TRUST SALES TAX**Transactions For Aug 2018**

Beginning Balance		\$1,566,616.70
Balance includes \$500,000 in investments		
Total Cash		\$1,566,616.70
Revenues:	<u>Year to Date</u>	
City Sales Tax	\$58,881.77	
City Use Tax	\$7,061.83	
TIF Allocation Golf	-\$25.86	
TIF Allocation Vintage	-\$762.49	
TIF: Vintage II	-\$89.88	
Investment Interest		
Interest Income	\$520.93	
Total Revenue		\$65,586.30
Disbursements:		
Bank Charges	-\$51.92	
Misc Concrete repairs	-\$7,641.96	
Infrastructure repairs	-\$3,080.88	
2018 Overlay	-\$225,784.87	
Operating Transfers - Finance Dept. (-\$250.00	
Operating Transfers - Gen Fund		
Operating Transfers - Const Services		
Operating Transfers - Comm Development		
Total Expense		-\$236,809.63
Ending Balance		\$1,395,393.37
Committed Funds:		
*Meeting August 10th approved funds		
2018 Overlay	-\$355,015.13	
Snow Removal	-\$35,000.00	
Misc Concrete Repairs	-\$141,428.99	
Bus Purchase	-\$15,000.00	
Infrastructure	-\$92,522.25	
Total Committed Funds		-\$638,966.37



City Council Meetings
Capital Improvements Authority Meeting - 9/10/2018

To: Authority Members
From: Steve Marriott, Director of Administrative Services
Date 8/28/2018
RE: Approval: Hall of Waters Maintenance Allocation

Over the past several years we have asked the Capital Improvements Authority to allocate money to fund minor maintenance projects at the Hall of Waters. As of July 31st, the balance of this maintenance allocation is \$1,721.

Currently staff is looking at a few projects that need to be completed in the coming months. Among those projects is a repair to the elevator which is currently out of service. The elevator is key to the building's Americans with Disabilities Act (ADA) compliance. We have been holding public meetings in the water bar area since the elevator broke down over a week ago. Some of the electronic components on the elevator have burnt up and Kone is having a hard time finding replacement parts due to the age of the elevator. Depending upon the scope of parts that have to be replaced to get the elevator operating this may be an expensive repair.

The second project we are looking at currently is the removal and repair of the front doors and automatic closers. Rust is building up on the frames to the front doors of the building making it increasingly difficult to get the doors to open and close correctly. This is the reason that one of the doors on the west side of the building is kept locked. We have been obtaining quotes for this repair and have found that the cost will exceed the remaining balance in the maintenance allocation. While we are making this repair we also plan to rekey the whole building to ensure that we can control access.

With these facts in mind, we are requesting an additional \$50,000 allocation into the Hall of Waters Maintenance reserve. This money will fund the above projects and other small projects as they arise.

Thank you,

Steve Marriott, Director of Administrative Services



Economic Development Capital Improvements Authority Meeting - 9/10/2018

To: Authority Members
From: Melinda Mehaffy, Economic Development Director
Date 8/28/2018
RE: Approval: Request for Blight Funds

The Community Development Department has worked with Public Works and the City Managers office this year to raze a number of blighted properties that were beyond repair.

Two of the more notable projects included a demolition of two homes on North Main Street and three homes on Wakana Street. The homes on North Main had numerous complaints on the property maintenance. The City acquired the homes through tax sale. Typically, when demolishing a smaller home, you can expect to have three to four dumpsters of trash and debris. In this particular case, the City took out 17 dumpsters for a dumpster cost of \$6,545. The labor for this project exceeded \$15,000.

The City has also tasked with tearing down a home at 442 N. Bluff when the owner did not have insurance and turned the property over to the City.

Another notable project was the razing of three homes in preparation for the new dog park next to Century Park. This property was purchased by the City in previous years and the homes were used for police and fire safety training prior to being razed. The demolition of these homes cost exceeded \$5,000.

We are here today asking for additional funds for the Blight Fund to assist in the demolition costs anticipated with the razing of 410 E. Broadway. This particular property is a city-owned property that used to be multi-family housing. In recent years, it has become a challenge for Code Enforcement and the Police Department as it has been used for illegal activity. The demolition of this building will make way for the redevelopment that is taking place on East Broadway. This property will become a parking lot that will allow for the redevelopment of 408 E. Broadway. Prior to its demolition, Peppard Seed Company, the developer of the East Broadway Project, has salvaged historic materials that can be used on other historic properties in the area. The two story home is expected to exceed what funds are remaining in the blight fund.

Staff is requesting that the fund be provided with an additional \$50,000 to assist in the demolition of scheduled projects.

Melinda Mehaffy, Economic Development Director



City Manager
Capital Improvements Authority Meeting - 9/10/2018

To: Authority Members
From: Molly McGovern, City Manager
Date: 9/6/2018
RE: Approval: Roof Replacement Request

The City solicited roof replacement bids for the Bank Building and Hall of Water on July 31, 2018. Two bids were received: JR & Co and Flynn. The roofs that are in need of replacement include the bank building at the corner of South and Thompson, Hall of Waters East, the roof over the Community Development Department and the Hall of Waters West, the roof over the courtroom. The roof product is a (TPO) Thermoplastic Polyolefin Adhered Roofing System with a 20 year total system warranty.

The bids were as follows:

60 Mil	H/W East	H/W West	Bank Bldg	Total Bid
JR& Co	40,308	56,374	176,521	273,203
Flynn	88,618	105,829	276,873	471,320
80 Mil				
JR& Co	42,466	59,611	184,650	286,727
Flynn	90,248	107,631	282,800	480,679

Both companies are located in Kansas City. JR& Co provided references from prior projects in the area. If the Capital Improvement Committee authorizes the funding of this project, we will be asking for bid approval at the following City Council meeting September 17th. Our request for funds includes the \$1,200 fee to have the roofs inspected for hail damage by our insurance company. The bids are good for 60 days.

Molly McGovern, City Manager

ATTACHMENTS:

Description	Type	Upload Date
Roof Replacement Bid Package	Backup Material	9/6/2018
Addendum #1	Backup Material	9/6/2018
Bid Tab Sheet - JR&CO	Backup Material	9/6/2018
Bid Tab Sheet - Flynn	Backup Material	9/6/2018



Table of Contents

- Advertisement for bids
- General Instructions
- Bid Form
- Affidavit of Compliance
- Bid Bond
- Wage Order #25
- Hall of Waters West Roofing Project
- Hall of Waters East Roofing Project
- Old Community Center Roofing Project
- Bank Building Roofing Project

ADVERTISEMENT FOR BIDS

Roof Replacement Three Locations

Separate sealed bids for the Roof Replacement at City Hall, Old Community Center and Old Bank Building will be received by CITY OF EXCELSIOR SPRINGS at the office of the City Manager until 2:00 o'clock (P.M. S.T.). July 31, 2018 and then at said office publicly opened and read aloud.

A Mandatory Pre Bid meeting will be held at City Hall on July 17th at City Hall at 10 AM 2018. All buildings will be available to visit at that time.

The Information for Bidders, Form of Bid, Form of Contract, Equipment Specifications, and other contract documents may picked up at The City Hall, City of Excelsior Springs, 201 E. Broadway, Excelsior Springs, MO 64024.

Location of other Buildings: Old Bank Building, 218 South Street
Old Community Center, 112 S. Thompson

Copies may also be obtained at the office of City Manager at 201 E. Broadway, Excelsior Springs, MO 64024 upon request at no charge.

The owner reserves the right to waive any informalities or to reject any or all bids.

Attention of bidders is particularly called to the requirements as to conditions of employment to be observed and minimum wage rates to be paid under the contract. MBE and WBE bidders are encouraged to bid as Prime and Sub-Contractors. Good faith efforts to be documented with Bid Submission.

No bidder may withdraw his bid within 60 days after the actual date of the opening thereof.

June 25, 2018

"EQUAL EMPLOYMENT OPPORTUNITY"



THE CITY OF EXCELSIOR SPRINGS
ROOFING PROJECT
6/26/2018

GENERAL INSTRUCTIONS FOR BIDS

All questions must be submitted by July 24, 2018, in writing to: lmurry@ci.excelsior-springs.mo.us.
(on behalf of the City of Excelsior Springs)

Bid Submittal Date: Tuesday, July 31, 2018, by 2 pm (Central Time).

Please submit a statement of Intent to Bid along with any Alternate Requests not later than July 17th by 4 pm (Central Time). Any contractor who intends to submit a bid using a roofing system other than the approved manufacturer must submit for pre-qualification in writing. These items must be submitted via email, fax, or other form in writing.

Pre-bid meeting at The Hall of Waters conference room 10:00 a.m. on July 17, 2018,

Bid Preparation & Submittal: All bids shall be in writing.

Subject line should read: "Bid for Roofing Projects for the City of Excelsior Springs."

Bids must be submitted by mail or personal delivery, and be enclosed in a sealed envelope plainly marked: "Bids for Roofing Projects for the City of Excelsior Springs: and addressed, mailed, and/or delivered To: City Manager, City of Excelsior Springs, 201 E. Broadway, Excelsior Springs, MO 64024.

To receive consideration, bids must be received at the above address prior to the bid opening time and date stated in this RFP. Contractors assume full responsibility for the actual delivery of bids during business hours at the specified address. Unless otherwise specifically stated in the RFP, all specifications and requirements constitute minimum requirements. All bids must meet or exceed the stated specifications or requirements. All equipment and supplies offered must be new, of current production, and available for marketing by the manufacturer. Unless specifically stated and allowed in the Detailed Specifications and Special Conditions, all pricing submitted in response to this RFP is firm and fixed.

Unless noted on the bid form by the contractor, it will be deemed that the article furnished is that designated by the specifications. City of Excelsior Springs reserves the right to return, at contractor's expense, all items that are furnished which are not acceptable as equals to items specified, and contractor agrees to replace such items with satisfactory items at the original bid price.

Bid bond of 5 percent must be submitted with all bids.



THE CITY OF EXCELSIOR SPRINGS
ROOFING PROJECT
6/26/2018

GENERAL INSTRUCTIONS FOR BIDS

Alternate Requests: To be considered, alternate requests must be submitted by July 17, 2018 and include the following information:

1. Manufacturer Specifications ("cut sheets").
2. Warranty Information.
3. Deviations from specification.
4. Bid submittal (the enclosed bid form must be completed and submitted by July 31, 2018 no later than 2:00 p.m.

Bid bond of 5 percent must be submitted with all bids.

Bid valid: for sixty days. City of Excelsior Springs reserves the right to modify quantity to any individual line item after receipt of final bids, at the unit cost through August 20, 2018.

Evaluation Criteria: Bids will be evaluated to determine the bid that offers the best value to City of Excelsior Springs. Award of the contract is intended to be awarded separately on each item to the best bid.

The evaluation will be based upon the following criteria, listed in order of descending priority. Although some factors are weighted more than others, all are considered necessary, and a bid must be technically acceptable in each area to be eligible for award. With regards to cost, City of Excelsior Springs reserves the right, in its sole discretion, to reject any bid whose price is outside of the competitive range.

1. Cost/Pricing factors.
2. Ability to meet delivery requirements.
3. Warranty period. Contractor must include description of warranty and timing.

Bid Form

Bid Date July 31, 2018 2:00 PM

Deliver Bids to City Manager's Office, 201 E. Broadway, Excelsior Springs, Missouri.

2018 Roofing Projects

Hall of Waters/City Hall 201 E. Broadway

Old Community Center 112 S. Thompson

Old Bank Building 218 South Street

<u>Building</u>	<u>Roof Area</u>	<u>60 Mil Price</u>	<u>80 Mil Price</u>
City Hall	East Roof	_____	_____
City Hall	West Roof	_____	_____
Old Community Center	All Sections	_____	_____
Old Bank Building	All Sections	_____	_____
All Buildings/All Sections Total Base Bid		_____	_____

Bid Bond: Accompanying the bid is a 5% Bid Bond payable to the City Clerk of Excelsior Springs, Missouri payable without conditions for the Total Base Bid.

****By signing the Bid, Company agrees to abide by attached State of Missouri Wage Order #25 Clay Co.**

****By signing the Bid, Company agrees to complete the work within 60 days of the Notice to Proceed. Bidder agrees to pay \$500 per day liquidated damages for each working day that the work is not substantially complete.**

****Successful bidder will supply, to owner, a Labor and Material Performance Bond for the full amount of contract.**

Company Name _____

Address _____

City _____ State _____ Zip _____

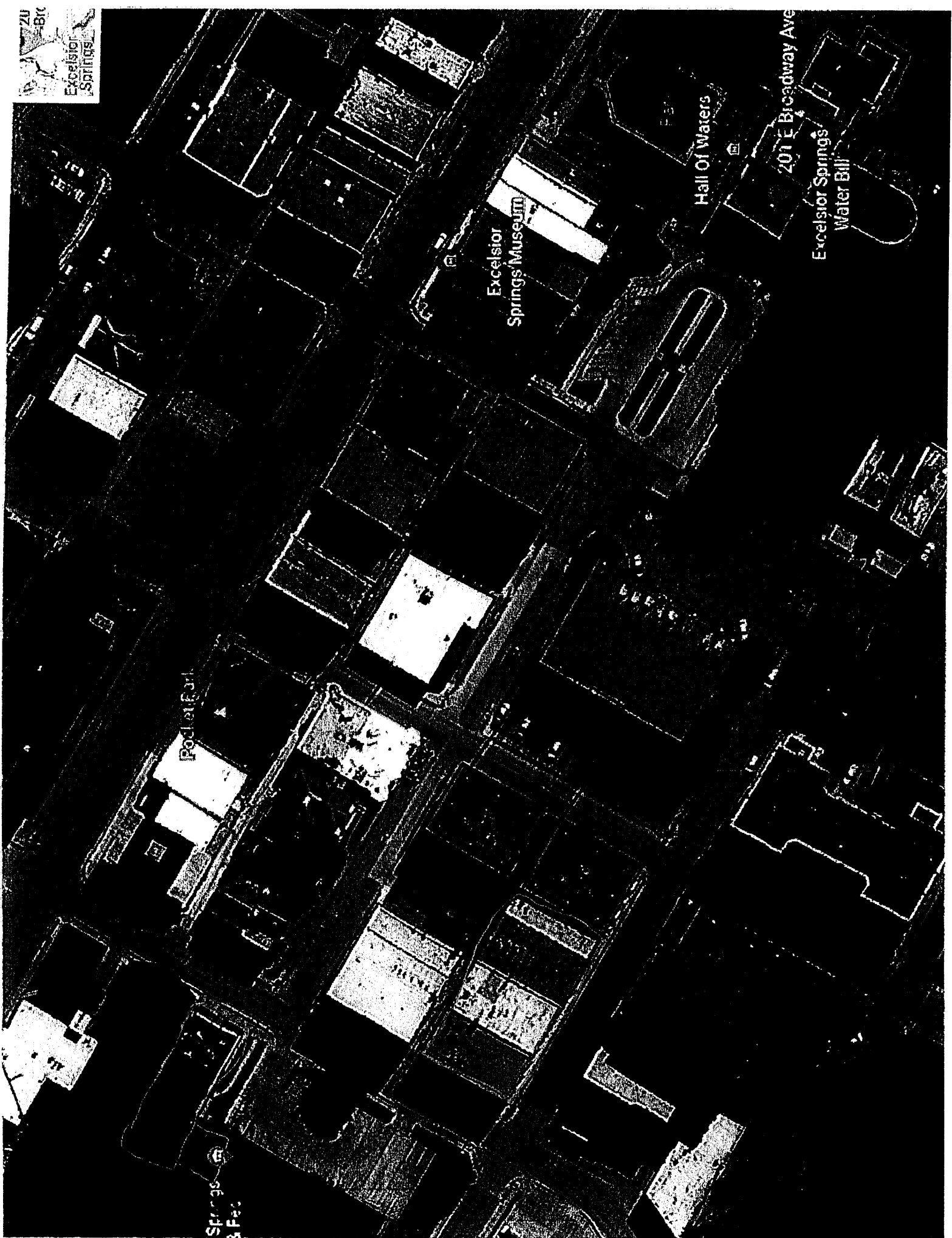
Telephone # _____ Fax# _____

Federal ID# _____

Printed Name of Person Signing Bid _____

Title of Person Signing Bid _____

Signature of Company Representative



Excelsior
Springs Museum

Hall Of Waters

201 E Broadway Ave

Excelsior Springs
Water Bill

Podiatry

Springs
& Pac

AFFIDAVIT of COMPLIANCE

(Section 285.530.2, Revised Statutes of Missouri)

State of Missouri)
) ss:
County of _____)

Now this ____ day of _____, 20____, the undersigned, being first duly sworn, deposes and says:

1. I am more than 18 years of age.
2. I make this affidavit from my personal knowledge of the facts stated herein or upon information and facts available to me as a duly authorized owner, partner, corporate, or LLC officer or Human Relations Director of _____ (“Contractor”).
3. I am authorized to make this affidavit on behalf of Contractor.
4. I state and affirm that Contractor is enrolled and is currently participating in E-Verify, a federal work authorization program or another equivalent electronic verification of work authorization program operated by the United States Department of Homeland Security under the Immigration Reform and Control Act of 1986.
5. Further, Contractor does not knowingly employ any person who is an unauthorized alien.
6. Further, Contractor has performed an electronic verification check as described above on all workers hired since January 1, 2009 or obtained documents required for completion of a Federal I-9 form before it began participating in E-Verify.
7. Attached to this affidavit is a true and accurate copy of Contractor’s Memorandum of Understanding with the United States concerning the use of E-Verify.

I certify under penalty of perjury that the statements above are complete, true and accurate to the best of my knowledge and belief.

Authorized Agent, Partner, Owner or Officer

Printed Name _____

Title _____

If Contractor has a Human Relations Director or equivalent that person must sign as an affiant as well.

I certify under penalty of perjury that the statements above are complete, true and accurate to the best of my knowledge and belief.

Human Relations Director

Printed Name

Title

Subscribed and sworn to before me this ____ day of _____, 20__.

Notary Public

My commission expires:

This form is promulgated pursuant to 15CSR 60-15.020. Use of this form is not required but the Attorney General has deemed this affidavit sufficient in form to satisfy the requirements of section 285.540 RSMo., Supp. 2008.

BID BOND

KNOW ALL MEN BY THESE PRESENTS, that we, _____
_____ as PRINCIPAL and
_____ as SURETY, are
held and firmly bound unto the City of Excelsior Springs, Missouri, in the sum of

_____ Dollars (\$ _____) lawful money of the United States, for the payment of which
sum well and truly to be made, we bind ourselves, our heirs, executors, successors, and
assigns, jointly and severally, firmly by these presents.

THE CONDITION OF THIS OBLIGATION IS SUCH, that whereas Principal has submitted a
bid dated _____, 2018, for 2018 Roofing Projects.

NOW, THEREFORE, if Principal shall not withdraw the bid within the period specified
therein after the opening of bids, or, if no period be specified, within sixty (30) days after the
bid opening, and shall within the period specified therefore, or if no period be specified, within
fifteen (15) days after the prescribed forms are presented to Principal for signature, enter into
a written contract with the City of Excelsior Springs in accordance with the bid as accepted, and
give (a) required bonds with good and sufficient surety or sureties for the faithful performance
and proper fulfillment of such contract and payment for labor and material furnished in the
performance of the contract, (b) required insurance certificate(s) and policies, and (c) the
required affidavit of compliance and related documentation, then the above obligation shall be
void, otherwise to remain in full force and effect.

PRINCIPAL

By: _____
(Signature)

Printed Name: _____

Title: _____

Date: _____

SURETY

By: _____

(Signature)

Printed Name: _____

Title: _____

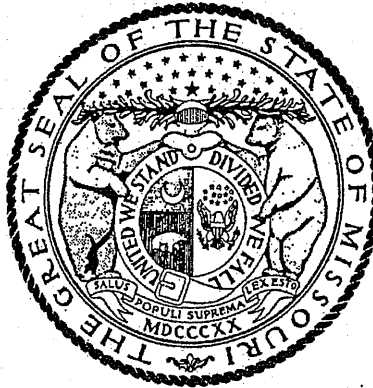
Date: _____

SURETY POWER OF ATTORNEY MUST BE ATTACHED

Missouri

Division of Labor Standards

WAGE AND HOUR SECTION



ERIC R. GREITENS, Governor

Annual Wage Order No. 25

Section 024

CLAY COUNTY

In accordance with Section 290.262 RSMo 2000, within thirty (30) days after a certified copy of this Annual Wage Order has been filed with the Secretary of State as indicated below, any person who may be affected by this Annual Wage Order may object by filing an objection in triplicate with the Labor and Industrial Relations Commission, P.O. Box 599, Jefferson City, MO 65102-0599. Such objections must set forth in writing the specific grounds of objection. Each objection shall certify that a copy has been furnished to the Division of Labor Standards, P.O. Box 449, Jefferson City, MO 65102-0449 pursuant to 8 CSR 20-5.010(1). A certified copy of the Annual Wage Order has been filed with the Secretary of State of Missouri.

Original Signed by

Matt Cowell, Director
Division of Labor Standards

Filed With Secretary of State: March 9, 2018

Last Date Objections May Be Filed: April 9, 2018

Prepared by Missouri Department of Labor and Industrial Relations

OCCUPATIONAL TITLE	** Date of Increase	*	Basic Hourly Rates	Over-Time Schedule	Holiday Schedule	Total Fringe Benefits
Asbestos Worker (H & F) Insulator			\$38.12	52	53	\$25.75
Boilermaker			\$36.56	57	7	\$29.13
Bricklayer and Stone Mason			\$34.74	58	39	\$19.29
Carpenter			\$37.73	63	68	\$16.85
Cement Mason			\$31.52	65	4	\$19.06
Communication Technician			\$22.00	FED		\$11.78
Electrician (Inside Wireman)			\$38.53	13	72	\$18.17 + 10%
Electrician (Outside-Line Construction\Lineman)			\$42.87	125	65	\$5.25 + 34.5%
Lineman Operator			\$39.62	125	65	\$5.25 + 34.5%
Groundman			\$27.63	125	65	\$5.25 + 34.5%
Elevator Constructor		a	\$45.49	26	54	\$33.235
Glazier			\$33.97	88	32	\$18.25
Ironworker			\$32.65	50	4	\$29.05
Laborer (Building):						
General			\$27.70	30	4	\$15.90
First Semi-Skilled			\$28.10	30	4	\$15.90
Second Semi-Skilled			\$28.50	30	4	\$15.90
Lather			USE CARPENTER RATE			
Linoleum Layer and Cutter			\$35.39	46	67	\$16.85
Marble Mason			\$35.16	25	4	\$14.11
Marble Finisher			\$24.58	25	4	\$8.92
Millwright			USE CARPENTER RATE			
Operating Engineer						
Group I			\$38.64	85	4	\$16.87
Group II			\$37.83	85	4	\$16.87
Group III			\$32.28	85	4	\$16.87
Group III-A			\$36.49	85	4	\$16.87
Group IV						
Group V			\$33.88	85	4	\$16.87
Painter			\$29.34	37	4	\$16.86
Pile Driver			USE CARPENTER RATE			
Pipe Fitter			\$44.48	2	33	\$21.15
Plasterer			\$31.79	68	4	\$17.01
Plumber			\$43.80	45	33	\$21.64
Roofer \ Waterproofer			\$32.55	95	2	\$18.09
Sheet Metal Worker			\$40.90	17	22	\$22.99
Sprinkler Fitter - Fire Protection			\$37.74	14	4	\$20.02
Terrazzo Worker			\$35.16	25	4	\$14.11
Terrazzo Finisher			\$24.58	25	4	\$8.92
Tile Setter			\$35.16	25	4	\$14.11
Tile Finisher			\$24.58	25	4	\$8.92
Traffic Control Service Driver			\$15.35	48	49	\$2.71
Truck Driver-Teamster						
Group I			\$30.09	100	4	\$10.90
Group II			\$30.09	100	4	\$10.90
Group III			\$30.29	100	4	\$10.90
Group IV			\$30.29	100	4	\$10.90

Fringe Benefit Percentage is of the Basic Hourly Rate

Section 024

CLAY COUNTY BUILDING CONSTRUCTION - OVERTIME SCHEDULE

FED: Minimum requirement per Fair Labor Standards Act means time and one-half (1½) shall be paid for all work in excess of forty (40) hours per work week.

NO. 2: Means the maximum of eight (8) hours shall constitute a day's work beginning at 8:00 a.m. to 12:00 noon, 12:30 p.m. to 4:30 p.m. The maximum work week shall be forty (40) hours beginning Monday at 8:00 a.m. and ending Friday at 4:30 p.m. Because of traffic, parking or other circumstances, the hours of work on any project may be any continuous 8½ hours period (8 hours of work plus 30 minutes for lunch) between 7:00 a.m. and 4:30 p.m. When circumstances warrant and when it is mutually beneficial and agreed to, the Employer may institute a work week consisting of four (4) consecutive ten (10) hour days, between the hours of 7:00 a.m. and 6:00 p.m. Monday through Thursday, with one-half (½) hour allowed for a lunch period each day. Friday may be used as a make-up day. After ten (10) hours in a workday, or forty (40) hours in a workweek, overtime shall be paid at a rate of one and one-half (1½) times the regular rate of pay. Overtime performed Monday through Saturday shall be paid at the rate of one and one-half (1½) times the regular rate of pay. Sundays and recognized holidays shall be paid at the double (2) time rate of pay. Labor Day shall be paid at triple (3) time. Shift work may be performed at the option of the Contractor. However, whenever shift work is performed it must cover a period not less than (5) consecutive working days. The day shift shall work a regular eight (8) hours shift as outlined above. Employees working a second shift shall receive an additional \$0.25 above the regular hourly rate and perform seven and one-half (7½) hours work for eight (8) hours pay. Third shift employees shall be paid an additional \$0.50 above the regular hourly rate and work seven (7) hours for eight (8) hours pay. In the event a first shift is not required, a second and third shift employee shall receive an additional 15% of the base rate and receive pay for actual hours worked.

NO. 13: Means a regular workday shall consist of eight (8) hours between 8:00 a.m. and 4:30 p.m. Forty (40) hours, within five (5) days -- Monday through Friday inclusive -- shall constitute the regular workweek. The Employer may alter the above stated hours by two (2) hours for an early starting and quitting time only, not to exceed eight (8) hours of work in any one day. When job conditions dictate and as required by the customer, the Employer shall be allowed to establish a four (4) day, ten (10) hour per day work week. This work week is defined as Monday through Thursday, with a Friday make-up day. The normal work day under a ten (10) hour four (4) day work week shall be from 7:00 a.m. to 6:00 p.m., with a one hour starting variance. The make-up day of Friday shall be instituted for specific reasons such as loss of production due to weather and/or holidays. All hours worked in excess of ten (10) hours per day or forty (40) hours per week or hours worked outside the normal work week shall be paid at the applicable overtime rate. The first four (4) hours of overtime after the normal workday, each day Monday through Friday and the first ten (10) hours of overtime on Saturdays shall be paid for at one and one-half (1½) times the regular straight time rate of pay. All other work performed outside of the regularly scheduled working hours and outside of the first ten (10) hours worked on Saturdays shall be paid for at double (2) the regular straight time rate of pay. Sundays and the recognized holidays shall be paid for at double (2) the regular straight time rate of pay, if worked. When so elected by the contractor, multiple shifts of at least five (5) days duration may be worked. When two (2) or three (3) shifts are worked: The first shift (day shift) shall be worked between the hours of 8:00 a.m. and 4:30 p.m. Workmen on the "day shift" shall receive eight (8) hours pay at the regular hourly rate for eight (8) hours work. The second shift (swing shift) shall be worked between the hours of 4:30 p.m. and 12:30 a.m. Workmen on the "swing shift" shall receive eight (8) hours pay at the regular hourly rate plus 10% for seven and one-half (7 ½) hours work. The third shift (graveyard shift) shall be worked between the hours of 12:30 a.m. and 8:00 a.m. Workmen on the "graveyard shift" shall receive eight (8) hours pay at the regular hourly rate plus 15% for seven (7) hours work. A lunch period of thirty (30) minutes shall be allowed on each shift. All overtime work required after the completion of a regular shift shall be paid at one and one-half (1½) times the "shift" hourly rate.

NO. 14: Means eight (8) hours per day shall constitute a day's work. The regular starting time shall be 8:00 a.m., and the regular quitting time shall be 4:30 p.m.; lunch time shall be twelve (12) o'clock noon to 12:30 p.m. The regular starting time may, by mutual consent of employees on the job site, and the employer, be between 7:00 a.m. and 9:00 a.m. with appropriate adjustments made to the regular quitting time and lunch time. All time worked before the regular starting time and after the regular quitting time, Monday through Friday, shall be paid at the rate of time and one-half (1½). Four (4) days at ten (10) hours a day may be worked at straight time. All work commencing with the beginning of the established work day on Saturday shall be paid at the rate of time and one-half (1½). All work commencing with the beginning of the established work day on Sundays and/or Holidays shall be paid at the rate of double (2) time.

CLAY COUNTY BUILDING CONSTRUCTION - OVERTIME SCHEDULE

NO. 17: Means the regular working day shall consist of eight (8) hours of labor between 7:00 a.m. and 3:30 p.m. and the regular work week shall consist of five (5) consecutive eight (8) hour days of labor beginning on Monday and ending with Friday of each week. All full-time or part-time labor performed during such hours shall be recognized as regular working hours and paid for at the regular hourly rate. Except as otherwise provided, all work performed outside of regular working hours during the regular work week, shall be at double (2) times the regular rate. Working hours may be varied by two (2) hours. When circumstances warrant and when it is mutually beneficial and agreed to by interested parties, the Employer may institute a work week consisting of four (4) consecutive ten (10) hour days, between the hours of five (5) a.m. and six (6) p.m., Monday through Thursday, with one-half (1/2) hour allowed for a lunch period each day. Friday may be used as a make-up day. The make-up day will be voluntary, and a decision not to work may not be held against the employee. When working four (4) ten (10) hour day's overtime will be paid at the time and one-half (1½) rate for the eleventh (11th) and twelfth (12th) hour, all other work will be paid at the double (2) time rate of pay. The first two (2) hours of overtime, Monday through Friday, and the first eight (8) hours on Saturday shall be at time and one-half (1½) for all work. All other overtime shall be at double (2) time. The first two (2) hours of overtime must be concurrent with the regular work day; two (2) hours prior to or following the regular work day are at time and one-half (1½). The regular workday (as previously defined) on Saturday is paid at time and one-half (1½). Work performed outside of the regular Saturday work day is at double (2) time. All work performed on recognized holidays, or days locally observed as such, and Sundays shall be paid at the double (2) time rate of pay.

NO. 25: Means forty (40) hours (5-8's) shall constitute a regular workweek, anything over eight (8) hours per day shall be paid for at one and one-half times the regular hourly rate. Work may be scheduled on a four days a week (Monday through Thursday) at 10 hours a day scheduled between 6:00 a.m. and 6:00 p.m. at the regular hourly rate understanding that anything over ten (10) hours per day shall be paid for at one and one-half times the regular hourly rate. Employment from 6:00 p.m. and 6:00 a.m. Monday through Friday shall be paid for at one and one-half times the regular hourly rate. For work scheduled on Saturday, all hours worked shall be paid for at one and one-half times the regular hourly rate. For work scheduled on Sunday, any hours worked shall be paid for at twice the regular hourly rate. Hours worked on Holidays will be paid at double time wages except for Veteran's Day.

NO. 26: Means that the regular working day shall consist of eight (8) hours worked between 6:00 a.m., and 5:00 p.m., five (5) days per week, Monday to Friday, inclusive. Hours of work at each jobsite shall be those established by the general contractor and worked by the majority of trades. (The above working hours may be changed by mutual agreement). Work performed on Construction Work on Saturdays, Sundays and before and after the regular working day on Monday to Friday, inclusive, shall be classified as overtime, and paid for at double (2) the rate of single time. The employer may establish hours worked on a jobsite for a four (4) ten (10) hour day work week at straight time pay for construction work; the regular working day shall consist of ten (10) hours worked consecutively, between 6:00 a.m. and 6:00 p.m., four (4) days per week, Monday to Thursday, inclusive. Any work performed on Friday, Saturday, Sunday and holidays, and before and after the regular working day on Monday to Thursday where a four (4) ten (10) hour day workweek has been established, will be paid at two times (2) the single time rate of pay. The rate of pay for all work performed on holidays shall be at two times (2) the single time rate of pay.

NO. 30: Means Monday through Sunday shall constitute the work week. Regular starting time shall be 8:00 A.M., except when the work week is scheduled as a week with starting time advanced or delayed. Starting time may be advanced or delayed by the employer up to two (2) hours from the regular starting time. Eight (8) hours shall constitute the work day. All work performed prior to or after the regular eight (8) hour work day, as described above, and all work performed on Saturday shall be paid at time and one-half (1½) the regular rate. In the event that a scheduled eight (8) hour work day is missed (not to include holidays) because of events out of the control of the contractor, then that missed work day may be made up at straight time the following Saturday. It is recognized that not all employees working on a Saturday make-up day will have worked the same number of hours during the regular work week. It is further recognized that any work after the forty (40) hours in a week must be paid at time and one-half (1½). Saturday make-up day shall not be used to make up for time lost due to recognized holidays. The employer may establish a 4-10's schedule on projects (4 days with 10 hours per day). If using a 4-10's schedule, a Friday make-up day is allowed. If using a 4 (10) schedule, any work more than ten (10) hours in a day or forty (40) hours in a work week shall be paid at the time and one-half (1½) rate. Friday make-up day shall not be used to make up for time lost due to recognized holidays. All work performed on Sundays or holidays shall be paid at the double (2) time rate.

CLAY COUNTY
BUILDING CONSTRUCTION - OVERTIME SCHEDULE

NO. 37: The Employer may choose, at his discretion, to work five eight hour days or four ten hour days with a Friday make-up day, Monday through Friday at straight time. Overtime shall be paid after eight (8) hours when working "five eights" and after ten hours when working "four tens". All work performed on Sundays and recognized holidays shall be paid for at the rate of double (2) time. All Saturday work shall be paid for at the rate of time and one-half (1½) the regular wage rate. All night work during the regular work week other than the above-mentioned days shall be paid for at the rate of time and one-half (1½) the regular wage scale until midnight and double (2) time after midnight except make-up time will be allowed under the following condition: In the event of inclement weather on exterior projects which prevents working the full regular eight (8) hour day, forty (40) hour work week schedule, a Saturday make-up day can be granted. Then said work on Saturday shall be paid at the straight time rate of pay up to a maximum total of forty (40) hours per week.

NO. 45: Means eight (8) hours shall constitute a day's work, beginning at 8:00 a.m. and ending at 4:30 p.m. The regular work week shall be forty (40) hours, beginning Monday, 8:00 a.m. and ending at 4:30 p.m. Friday. Because of traffic, parking and other circumstances, the hours of work on any project may begin as early as 6:00 a.m. with eight (8) hours worked between 6:00 a.m. and 4:30 p.m. When circumstances warrant and when it is mutually beneficial and agreed to, the employer may institute a work week consisting of four (4) consecutive ten (10) hour days, between the hours of 7:00 a.m. and 6:00 p.m., Monday through Thursday. Friday may be used as a make-up day. After ten (10) hours in a workday, or forty (40) hours in a workweek, overtime shall be paid at a rate of one and one-half (1½) times the regular rate of pay. All overtime Monday through Saturday shall be paid at the rate of time and one-half (1½) the regular rate of pay. Sunday and recognized holidays shall be paid at double (2) time. Labor Day shall be paid at triple (3) time. Shift work may be performed at the option of the Contractor. However, whenever shift work is performed it must cover a period not less than (5) consecutive working days. The day shift shall work a regular eight (8) hours shift as outlined above. The hourly rate for second shift (seven and one-half hours worked for eight hours paid) shall be twenty-five cents (\$0.25) over and above the hourly rate. The hourly rate for third shift (seven hours worked, eight hours paid) shall be fifty cents (\$0.50) above the hourly rate. If no first shift is worked, second and third shift employees shall receive an additional fifteen percent (15%) over and above the hourly rate for actual hours worked.

NO. 46: Means the regular work day shall be eight (8) hours from 6:00 a.m. to 6:30 p.m. Starting time may be between 6:00 a.m. and 10:00 a.m. The regular work week shall be forty (40) hours, beginning between 6:00 a.m. and 10:00 a.m. on Monday and ending between 2:30 p.m. and 6:30 p.m. on Friday. All hours in excess of the regular work day and work week shall be considered overtime. Overtime on days recognized as regular work days and on Saturday shall be paid for at the rate of time and one-half (1½) the regular rate. Sunday and recognized holidays shall be paid for at the rate of double time (2) for time worked. The Employer may establish a work week consisting of four (4) days, Monday through Thursday, each day consisting of ten (10) hours at straight time rate of pay. The 4-10's must run for a period of at least four (4) days.

NO. 48: Means the regularly scheduled work week shall be five (5) consecutive days, Monday through Friday or Tuesday through Saturday. Eight (8) hours shall constitute a day's work. Starting time shall not be earlier than 7:00 a.m. nor later than 10:00 a.m. Forty (40) hours shall constitute a week's work. Overtime at the rate of time and one-half (1½) will be paid for all work in excess of forty (40) hours in any one work week. On the Monday through Friday schedule, all work performed on Saturday will be time and one-half (1½) unless time has been lost during the week, in which case Saturday will be a makeup day to the extent of the lost time. On the Tuesday through Saturday schedule, all work performed on Monday will be time and one-half (1½) unless time has been lost during the week, in which case Monday will be a make-up day to the extent of the lost time. Any work performed on Sunday will be double (2) time. If employees work on any of the recognized holidays, they shall be paid time and one-half (1½) their regular rate of pay for all hours worked.

NO. 50: Means eight (8) hours constitute a normal day's work Monday through Friday. Any time worked over eight (8) hours will normally be paid at time and one-half (1½) except for exclusions stated in some following additional sentences. The Employer, at his discretion, may start the work day between 6:00 a.m. and 9:00 a.m. Any schedule chosen shall be started at the beginning of the work week (Monday) and used for at least five days. Work may be scheduled on a four (4) days a week (Monday through Thursday) at ten (10) hours a day schedule. If such a schedule is employed, then Friday may be used as a make-up day when time is lost due to inclement weather. Time and one-half (1½) shall be paid for any work in excess of eight (8) hours in any regular work day Monday through Friday unless working 4-10's, then time and one-half (1½) after ten (10) hours. All work performed on Saturday will be time and one-half (1½). Double (2) time shall be paid for all work on Sundays and recognized holidays.

CLAY COUNTY BUILDING CONSTRUCTION - OVERTIME SCHEDULE

NO. 52: Means the regular workweek shall consist of five (5) eight (8) hour days, Monday through Friday. The regular workday shall consist of an eight (8) hour period, to be worked between the agreed upon starting time and ending no later than 4:30 p.m. The agreed upon starting time shall be any time between the hours of 6:00 a.m. and 8:00 a.m. The option exists for the employer to use a four (4) day, ten (10) hour work week. Days worked shall be Monday through Thursday or Tuesday through Friday. If the job requires men on duty all five (5) days, then part of the crew may work the first four (4) days and the remainder of the crew may work the last four (4) days. Hours each day shall be from 7:00 a.m. to 5:30 p.m. Interested parties on the project must agree to this clause before it may be used. Once this clause has been put into effect, it shall remain as long as the majority of the Employees on the project and the Employer agree to keep it. The four (4) day clause shall not be used to circumvent a Holiday. Except as otherwise provided, all work performed outside the regular working hours and performed during the regular work week (Monday through Friday) shall be at the following rates of pay:

Holidays-New Year's Day, Memorial Day, Independence Day, Thanksgiving Day, Christmas Day (or days observed as such) shall be recognized as Holidays that shall be paid at two (2) times the regular rate of pay.

Labor Day-No work shall be performed on Labor Day except in special cases of emergency. Rate of pay shall be at three (3) times the regular rate of pay.

Overtime-Work performed outside of the regular work day (the regular work day shall consist of an eight (8) hour period, to be worked between the agreed upon starting time and ending not later than 4:30 p.m. The agreed upon starting time shall be any time between the hours of 6:00 a.m. and 8:00 a.m., by mutual consent of the interested party's.), shall be:

- A. Hours worked Monday through Friday, the first two (2) hours of overtime will be paid at time and one-half (1½). All other overtime will be paid at the double (2) time rate.
- B. The first ten (10) hours worked on Saturday will be paid at time and one-half (1½), with all other hours to be paid at the double (2) time rate.
- C. Sundays and Holidays (except Labor Day) shall be paid at the double (2) time rate.

NO. 57: Means eight (8) hours per day shall constitute a day's work and forty (40) hours per week, Monday through Friday, shall constitute a week's work. The regular starting time shall be 8:00 a.m. If a second or third shift is used, the regular starting time of the second shift shall be 4:30 p.m. and the regular starting period for the third shift shall be 12:30 a.m. These times may be adjusted by the employer. The day shift shall work a regular eight (8) hours shift as outlined above. Employees working a second shift shall receive an additional \$0.25 above the regular hourly rate and perform seven and one-half (7½) hours work for eight (8) hours pay. Third shift employees shall be paid an additional \$0.50 above the regular hourly rate and work seven (7) hours for eight (8) hours pay. When circumstances warrant, the Employer may change the regular workweek to four (4) ten-hour days at the regular time rate of pay. All time worked before and after the established workday of eight (8) hours, Monday through Friday, and all time worked on Saturday shall be paid at the rate of time and one-half (1½) except in cases where work is part of an employee's regular Friday shift. All time worked on Sunday and recognized holidays shall be paid at the double (2) time rate of pay except in cases where work is part of an employee's previous day's shift. For all overtime hours worked \$27.76 of the fringe benefits portion of the prevailing wage shall be paid at the same overtime rate at which the cash portion of the prevailing wage is to be paid. The remaining \$1.37 of the fringe benefit portion of the prevailing wage may be paid at straight time.

NO. 58: Means eight (8) consecutive hours, between 6:00 a.m. and 5:30 p.m., shall constitute a day's work. Five (5) day's work, Monday through Friday, shall constitute a normal work week. Work performed in excess of eight (8) hours per day or eight hours beyond normal starting time for that project excluding lunch Monday through Friday, and all work performed on Saturday, shall be paid for the rate of time and one-half (1½). When Sundays and recognized holidays are worked, the worker(s) shall be paid at the rate of double (2) time. Work may be scheduled on a four (4) days a week (Monday through Thursday) at ten (10) hours a day schedule at straight time. A Friday make-up day is available if time is lost due to inclement weather and at least sixteen (16) hours, but not more than thirty (30) hours, were worked during the week.

NO. 63: Means eight (8) hours shall constitute the regular work day between time that may be advanced or delayed by two (2) hours on either side of 8:00 AM. The Employer may establish a work week consisting of four (4) days, Monday through Thursday, each day consisting of ten (10) hours straight time. The four (4) tens (10s) must run for a period of at least four (4) days, Monday through Thursday. All work on Friday on a four (4) tens (10) project will be paid at the rate of time and one-half (1½). All work performed on Saturday shall be paid at time and one-half (1½). All work performed on Sundays and recognized holidays must be paid at double (2) time. All work performed prior to or after the regular eight (8) hour work day, or ten (10) hour work day, as described above shall be paid at time and one-half (1½) the regular rate.

CLAY COUNTY BUILDING CONSTRUCTION - OVERTIME SCHEDULE

NO. 65: Means Monday through Sunday shall constitute the work week. Regular starting time shall be 8:00 a.m., with one half hour for lunch between three and one-half (3½) and five (5) hours after starting time. The starting time may be advanced by two (2) hours or delayed one (1) hour by the employer from the regular starting time. All work performed before the advanced starting time and during the half hour lunch shall be paid at the overtime rate of time and one-half (1½). Work performed outside these hours shall be paid at the overtime rate of time and one-half (1½), except as provided otherwise below. All work performed on Sundays or recognized holidays shall be paid at the double (2) time rate. When the start time is delayed past 9:00 a.m., the employee's pay shall start at 9:00 a.m. and all time, after the normal quitting time (5:30 p.m.), shall be paid at the overtime rate. Eight (8) hours shall constitute the work day. All work performed prior to or after the regular eight (8) hour work day, as described above, and all work performed on Saturday shall be paid at time and one-half (1½) the regular rate. In the event that a scheduled eight (8) hour work day is missed (not including recognized holidays) because of inclement weather, then that missed work day may be made up at straight time on the following Saturday. It is recognized that not all employees working on a Saturday make-up day will have worked the same number of hours during the regular work week. It is further recognized that any work after forty (40) hours must be paid at time and one-half (1½). The employer may establish a 4-10's schedule on projects (4 days with 10 hours per day at straight time). In order to use the 4-10's schedule, the employer must schedule the 4-10's for a minimum of one (1) week. If using a 4-10's schedule, a Friday make-up day is allowed.

NO. 68: Means Monday through Sunday shall constitute the work week. Regular starting time shall be 8:00 a.m., with one half hour for lunch between three and one-half and five hours after starting time. The starting time may be advanced or delayed by the employer up to one hour from the regular starting time. All work performed before the advance starting time and during the half hour lunch shall be paid at the overtime rate of time and one-half (1½). Work performed outside these hours shall be paid at the overtime rate of time and one-half (1½), except as provided otherwise below. All work performed on Sundays or holidays shall be paid at the double (2) time rate. Eight (8) hours shall constitute the work day. All work performed prior to or after the regular eight (8) hour work day, as described above, and all work performed on Saturday shall be paid at time and one-half (1½) the regular rate, except as hereinafter described. In the event that a scheduled eight (8) hour work day is missed (not including recognized holidays) because of inclement weather, then that missed work day may be made up at straight time on the Saturday in the week of the pay period. It is recognized that not all employees working on a Saturday make-up day will have worked the same number of hours during the regular work week. It is further recognized that any work after forty (40) hours must be paid at time and one-half (1½). The employer may establish a 4-10's schedule on projects (4 days with 10 hours per day at straight time). In order to use the 4-10's schedule, the employer must schedule the 4-10's for a minimum of one (1) week. If using a 4-10's schedule, a Friday make-up day is allowed.

NO. 85: Means the work week shall be Monday through Sunday. Eight (8) hours shall constitute a day's work to begin between 6:00 a.m. and 9:00 a.m. and end between 2:30 p.m. to 5:30 p.m. Employees required to work during their lunch period shall receive the overtime rate. Employees shall receive time and one-half (1½) for all time they are required to work prior to their normal starting time or after eight (8) hours or normal quitting time Monday through Friday, or all day on Saturday. If an Employer has started the work week on a five day, eight hours a day schedule, and due to inclement weather misses any time, then he may switch to a nine or ten hours a day schedule, at straight time, for the remainder of that work week in order to make up for the lost time (10-hour make-up day). All work over ten (10) hours a day or over forty (40) hours a week must be paid at time & one-half (1½). Sundays and recognized holidays shall be paid at the double (2) time rate of pay. A contractor may alter the regular work week to four (4) ten (10) hour days at straight time rate of pay. To do this the scheduled 4-10's must be worked at least one full week and the regular workweek shall be Monday through Thursday with Friday being a make-up day at straight time for days missed in the regular workweek due to inclement weather. If 5-8's are being worked, Saturday may be used as a make-up day at straight time if inclement weather prevents work during the normal work week.

CLAY COUNTY BUILDING CONSTRUCTION - OVERTIME SCHEDULE

NO. 88: Means the regular work week shall consist of five (5) eight (8) hour days, 7:00 a.m. to 3:30 p.m., Monday through Friday, except when the work week is scheduled as a 4-10's week or as a week with start time advanced or delayed as described below. The starting time may be advanced or delayed by one hour on either side of 7:00 a.m. The advanced or delayed starting time must run for a period of at least five (5) days. The Employer may establish a work week consisting of four (4) days, during the regular work week, each day consisting of ten (10) hours at straight time. The 4-10's must run for a period of at least four (4) days. Time and one-half (1½) shall be paid for any work in excess of eight (8) hours in any regular work day Monday through Friday (or ten hours in a 4-10's week), the first eight (8) hours of a Saturday, and it shall be at time and one-half (1½) for the Friday and Saturday following Thanksgiving. Double (2) time shall be paid for the following time worked on Sunday, New Year's Day, Memorial Day, Fourth of July, Labor Day, Thanksgiving Day and Christmas Day, as well as any work in excess of eight (8) hours on a Saturday and the Saturday of a three-day weekend (except the Saturday following Thanksgiving).

NO. 95: Means a regular workday shall consist of eight and one-half (8½) hours elapsed time, including one-half hour for lunch. The crew starting times shall be flexible within the period of daylight to 8:00 a.m. Any work performed over ten (10) hours of elapsed time per day including one-half hour for lunch and/or any work performed over forty (40) hours at the straight time rate in one week shall be paid at time and one-half (1½) the straight time rate. Saturday shall be a voluntary make-up day at straight time at the discretion of the contractor and with the consent of the employees. Sunday and recognized holidays shall be paid for at double (2) time.

NO. 100: Means eight (8) hours shall constitute a day's work, and five (5) continuous eight-hour days shall constitute a week's work, Monday through Friday. Time and one-half (1½) the regular hourly rate shall be paid for all work performed in excess of eight (8) hours in any one day or forty (40) hours in any one week. Starting time shall be between 6:00 a.m. and 9:00 a.m. All work over eight (8) hours in a regular 5-day 8-hour schedule shall be at the appropriate overtime rate. All time worked before the regular scheduled starting time shall be paid for at the rate of time and one-half (1½) and shall not apply to regular shift. All time worked after eight (8) hours in any one day or after 5:30 p.m., whichever comes first, shall be paid at the time and one-half (1½) rate. An Employer, at his option, may elect to work four (4) ten (10) hour days, Monday through Thursday, at straight time. All such work must be done at least one week in duration. All work over ten (10) hours in one day or forty (40) hours in a week shall be at the overtime rate. Any employee who is scheduled to work on any regular work day but is prevented from working because of weather conditions, shall be permitted to work on Saturday (Friday if working 4-10's) as a make-up day at the straight time rate of pay. When an employee is required to work on any recognized holiday they shall receive the double (2) time rate for all time that they are required to perform work. All time worked from 12:00 Midnight Saturday to 12:00 Midnight Sunday shall be paid for at the rate of double (2) time on single shift.

NO. 125: Eight (8) hours of work between the hours of 8:00 a.m. and 4:30 p.m. shall constitute a work day. Forty (40) hours within the five (5) days, Monday through Friday inclusive, shall constitute the work week. Starting time may be adjusted not to exceed two (2) hours. Work performed outside of the aforementioned will be paid at the applicable overtime rate. When starting time has been adjusted, all other provisions concerning the work day shall be adjusted accordingly. The overtime rate of pay shall be one and one-half (1½) times the regular rate of wages, other than on Sundays, holidays and from Midnight until 6:00 a.m., which will be paid at double (2) the straight time rate.

CLAY COUNTY
BUILDING CONSTRUCTION - HOLIDAY SCHEDULE

NO. 2: All work performed on New Year's Day, Memorial Day, Fourth of July, Labor Day, Thanksgiving Day, Christmas Day, or the days observed as such, shall be paid at the double time rate of pay.

NO. 4: All work done on New Year's Day, Memorial Day, Independence Day, Labor Day, Veterans' Day, Thanksgiving Day and Christmas Day shall be paid at the double time rate of pay. If any of the above holidays fall on Sunday, Monday will be observed as the recognized holiday. If any of the above holidays fall on Saturday, it will be celebrated on Saturday.

NO. 7: The following days are assigned days and are recognized as holidays: New Year's Day, Memorial Day, Independence Day, Labor Day, Veteran's Day, Thanksgiving Day, and Christmas Day. If a holiday falls on a Sunday, it shall be observed on the following Monday. If a holiday falls on a Saturday, it shall be observed on the preceding Friday. No work shall be performed on Labor Day except in case of jeopardy to work under construction. This is applied to protect Labor Day. When a holiday falls during the normal work week, Monday through Friday, it shall be counted as eight (8) hours toward the forty (40) hour week. However, no reimbursement for these eight (8) hours is to be paid to the workman unless worked. If workman are required to work the above enumerated holidays or days observed as such, or on Sunday, they shall receive double (2) the regular rate of pay for such work.

NO. 22: All work performed on New Year's Day, Memorial Day, Independence Day, Labor Day, Thanksgiving Day, Christmas Day, or days locally observed as such, and Sunday shall be recognized as holidays. If a holiday falls on Saturday, Friday shall be observed; if it falls on Sunday, Monday shall be observed. All work performed on holidays shall be paid at the double (2) time rate of pay.

NO. 32: All work performed for the Friday and Saturday following Thanksgiving shall be paid at the time and one-half (1½) rate of pay. All work performed on Sundays, New Year's Day, Memorial Day, Fourth of July, Labor Day, Thanksgiving Day and Christmas Day shall be paid at the double (2) time rate of pay. When one of the above holidays falls on Sunday, the following Monday shall be observed and when one of the above holidays falls on Saturday, the preceding Friday shall be observed.

NO. 33: All work done on New Year's Day, Memorial Day, Fourth of July, Thanksgiving Day and Christmas Day shall be paid at the double time rate of pay. Labor Day shall be paid at the triple (3) time rate of pay. If the holiday falls on Sunday, the following Monday will be observed; if the holiday falls on Saturday, the preceding Friday will be observed.

NO. 39: No work shall be done on the following holidays: New Year's Day, Memorial Day, Independence Day, Labor Day, Thanksgiving Day, and Christmas. Any of these holidays falling on Sunday, the following Monday shall be a holiday, and any of these holidays falling on Saturday, the preceding Friday shall be a holiday.

NO. 49: The following days shall be observed as legal holidays: New Year's Day, Decoration Day, July 4th, Labor Day, Thanksgiving Day, Christmas Day, Employee's birthday and two (2) personal days. The observance of one (1) of the personal days to be limited to the time between December 1 and March 1 of the following year. If any of these holidays fall on Sunday, the following Monday will be observed as the holiday and if any of these holidays fall on Saturday, the preceding Friday will be observed as the holiday. If employees work on any of these holidays they shall be paid time & one-half (1½) their regular rate of pay for all hours worked.

NO. 53: All work done on New Year's Day, Memorial Day, Independence Day, Thanksgiving Day, Christmas Day or days observed as such for these holidays shall be paid at the double (2) time rate of pay. No work shall be performed on Labor Day except in special cases of emergency, and then the rate of pay shall be at three (3) times the regular rate of pay. When a holiday falls on a Sunday, the following Monday shall be observed as the holiday. When a holiday falls on Saturday, the preceding Friday shall be observed as the holiday.

NO. 54: All work performed on New Year's Day, Memorial Day, Independence Day, Labor Day, Veteran's Day, Thanksgiving Day, the Friday after Thanksgiving Day, and Christmas Day shall be paid at the double (2) time rate of pay. When a holiday falls on Saturday, it shall be observed on Friday. When a holiday falls on Sunday, it shall be observed on Monday.

CLAY COUNTY
BUILDING CONSTRUCTION - HOLIDAY SCHEDULE

NO. 65: Work performed on New Year's Day, Memorial Day, Fourth of July, Labor Day, Thanksgiving Day, Christmas Day, or days celebrated as such, shall be paid at the double time rate of pay. If the holiday falls on Saturday, it will be observed on Friday; if the holiday falls on Sunday, it will be observed on Monday, and shall be paid for at double (2) the regular straight time rate of pay.

NO. 67: All work performed on New Year's Day, Memorial Day, Christmas Day, Fourth of July and Thanksgiving Day, from midnight to midnight, shall be paid for at the rate of double time (2) the basic rate of pay if required to work in addition to any other pay otherwise required hereunder as holiday pay. Positively no work shall be performed on Labor Day. Martin Luther King's Birthday, Veteran's Day, and the day after Thanksgiving Day shall be considered optional holidays, and if the Employer and employees agree that work will be performed on that day, no premium pay will be required. Should any of the above holidays fall on Saturday, the holiday will be observed on Friday. Should any of the above holidays fall on Sunday, the holiday will be observed on Monday.

NO. 68: All work performed on New Year's Day, Decoration Day (Memorial Day), Independence Day (Fourth of July), Labor Day, Thanksgiving Day, Christmas Day, or days observed as such, shall be paid at the rate of double (2) time. When a holiday falls on a Saturday, Friday shall be observed. When a holiday falls on a Sunday, Monday shall be observed. No work shall be performed on the Fourth of July or Labor Day except to save life or property. Where one of the holidays specified falls or is observed during the work week, then all work performed over and above thirty-two (32) hours in that week shall be paid at the rate of time and one-half (1½).

NO. 72: All work performed on New Year's Day, Memorial Day (last Monday in May), Independence Day, Labor Day, Thanksgiving Day and Christmas Day shall be paid for at double (2) the regular straight time rate of pay. Any one of the above listed holidays falling on Sunday shall be observed on the following Monday and paid for at double (2) the regular straight time rate of pay, if worked. Any one of the above listed holidays falling on Saturday shall be observed on the prior Friday and paid for at double (2) the regular straight time rate of pay, if worked. No work shall be performed on Labor Day except in case of emergency.

OCCUPATIONAL TITLE	* Date of Increase	Basic Hourly Rates	Over-Time Schedule	Holiday Schedule	Total Fringe Benefits
Carpenter		\$37.73	1	17	\$16.85
Cement Mason		\$31.50	3	2	\$16.77
Electrician (Outside-Line Construction\Lineman)		\$42.87	18	24	\$5.25 + 34.5%
Lineman Operator		\$39.62	18	24	\$5.25 + 34.5%
Lineman - Tree Trimmer		\$22.51	31	30	\$5.50 + 28%
Groundman		\$27.63	18	24	\$5.25 + 34.5%
Groundman - Tree Trimmer		\$18.21	31	30	\$5.50 + 28%
Laborer					
General Laborer		\$29.58	3	2	\$15.23
Skilled Laborer		\$30.79	3	2	\$15.23
Millwright		\$37.73	1	17	\$16.85
Operating Engineer					
Group I		\$36.17	3	2	\$16.84
Group II		\$35.13	3	2	\$16.84
Group III		\$35.13	3	2	\$16.84
Group IV		\$30.66	3	2	\$16.84
Oiler-Driver		\$34.01	3	2	\$16.84
Pile Driver		\$37.73	1	17	\$16.85
Traffic Control Service Driver		\$29.58	FED		\$15.23
Truck Driver-Teamster					
Group I		\$31.49	3	2	\$14.85
Group II		\$31.49	3	2	\$14.85
Group III		\$31.49	3	2	\$14.85
Group IV		\$31.49	3	2	\$14.85

Use Heavy Construction Rates on Highway and Heavy construction in accordance with the classifications of construction work established in 8 CSR 30-3.040(3).

Use Building Construction Rates on Building construction in accordance with the classifications of construction work established in 8 CSR 30-3.040(2).

If a worker is performing work on a heavy construction project within an occupational title that is not listed on the Heavy Construction Rate Sheet, use the rate for that occupational title as shown on the Building Construction Rate sheet.

**CLAY COUNTY
HEAVY CONSTRUCTION - OVERTIME SCHEDULE**

FED: Minimum requirement per Fair Labor Standards Act means time and one-half (1½) shall be paid for all work in excess of forty (40) hours per work week.

NO. 1: Means (8) hours shall constitute the regular work day between time that may be advanced or delayed by two (2) hours on either side of 8:00 AM. The Employer may establish a work week consisting of four (4) days, Monday through Thursday, each day consisting of ten (10) hours straight time. The four (4) tens (10s) must run for a period of at least four (4) days, Monday through Thursday. All work on Friday on a four (4) tens (10) project will be paid at the rate of time and one-half (1½). All work performed on Saturday shall be paid at time and one-half (1½). All work performed on Sundays and recognized holidays must be paid at double (2) time. All work performed prior to or after the regular eight (8) hour work day, or ten (10) hour work day, as described above shall be paid at time and one-half (1½) the regular rate.

NO. 3: Means a regular work week shall consist of not more than forty (40) hours of work and all work performed over and above ten (10) hours per day or forty (40) hours per week shall be paid at the rate of time & one-half (1½). Workers shall receive time and one-half (1½) for all work performed on Sundays and recognized holidays. Double (2) time shall be paid for work performed on Sundays or recognized holidays when and only if any other craft employees of the same employer at work on that same job site are receiving double (2) time pay for that Sunday or Holiday work. A work day is to begin between 6:00 a.m. and 9:00 a.m. at the option of the Employer except when inclement weather or other conditions beyond the reasonable control of the Employer prevents work, in which event, the starting time may be delayed, but not later than 12:00 noon. Where one of the recognized holidays falls or is observed during the work week, then all work performed over and above thirty-two (32) hours in that week shall be paid at the rate of time and one-half (1½).

NO. 18: Eight (8) hours of work between the hours of 8:00 a.m. and 4:30 p.m. shall constitute a work day. Forty (40) hours within the five (5) days, Monday through Friday inclusive, shall constitute the work week. Starting time may be adjusted not to exceed two (2) hours. Work performed outside of the aforementioned will be paid at the applicable overtime rate. When starting time has been adjusted, all other provisions concerning the work day shall be adjusted accordingly. The overtime rate of pay shall be one and one-half (1½) times the regular rate of wages, other than on Sundays, holidays and from Midnight until 6:00 a.m., which will be paid at double (2) the straight time rate.

NO. 31: Means the overtime rate shall be time and one-half the regular rate for work over forty (40) hours per week. Sundays and Holidays shall be paid at double the straight time rate. All employees performing work on affected properties during or following emergencies shall receive the applicable rate of pay for the first sixteen (16) consecutive hours and all hours worked in excess of sixteen (16) consecutive hours shall be paid at double time until broken by an eight (8) hour rest period. Should an employee be called back to work within two hours of his normal quitting time, the previous hours worked shall count toward the above sixteen (16) hour provision.

**CLAY COUNTY
HEAVY CONSTRUCTION - HOLIDAY SCHEDULE**

NO. 2: All work performed on New Year's Day, Decoration Day (Memorial Day), Independence Day (Fourth of July), Labor Day, Thanksgiving Day and Christmas Day, or days observed as such, and Sundays shall be paid at the rate of time and one-half (1½). Double (2) time shall be paid for work on Sundays or recognized holidays when and only if other craft employees of the same employer at work on that same job site are receiving double (2) time pay for that Sunday or holiday work. No work shall be performed on Labor Day, except in case of jeopardy of life or property. This rule is applied to protect Labor Day. When one of the above holidays falls on a Saturday, the preceding Friday shall be observed; when the holiday falls on a Sunday, the following Monday shall be observed. Where one of the specified holidays falls or is observed during the work week, then all work performed over and above thirty-two (32) hours in that week shall be paid at the rate of time and one-half (1½).

NO. 17: All work performed on New Year's Day, Decoration Day (Memorial Day), Independence Day (Fourth of July), Labor Day, Thanksgiving Day, Christmas Day, or days observed as such, shall be paid at the rate of double (2) time. When a holiday falls on a Saturday, Friday shall be observed. When a holiday falls on a Sunday, Monday shall be observed. No work shall be performed on the Fourth of July or Labor Day except to save life or property. Where one of the holidays specified falls or is observed during the work week, then all work performed over and above thirty-two (32) hours in that week shall be paid at the rate of time and one-half (1½).

NO. 24: Work performed on New Year's Day, Memorial Day, Fourth of July, Labor Day, Thanksgiving Day, Christmas Day, or days celebrated as such, shall be paid at the double time rate of pay. If the holiday falls on Saturday, it will be observed on Friday; if the holiday falls on Sunday, it will be observed on Monday, and shall be paid for at double (2) the regular straight time rate of pay.

NO. 30: All work performed on New Year's Day, Decoration Day, Fourth of July, Labor Day, Christmas Day, Thanksgiving Day and Day after Thanksgiving or days celebrated for the same.

Hall of Waters City Hall West Excelsior Springs, MO Roofing Project

PART 1 GENERAL

1.01 DESCRIPTION

- A. The City Hall East Hall of Waters is located at in Excelsior Springs, MO. Larry Murry, Project Manager/Coordinator, is the Owner's Representative and may be contacted regarding any questions or for a pre-bid job site inspection, phone 816-630-9593.
- B. The project consists of installing Versico's VersiWeld (TPO) Adhered Roofing System as outlined below:

Remove all existing gravel from roof area. Any existing wet insulation shall be removed and replaced with like material. Apply the VersiWeld Adhered Roofing System in conjunction with Versico 1/2" HD and Versico ISO insulation installed over the existing BUR roof using Cav Grip 3V and Flexible Dash Adhesive.

1.02 EXTENT OF WORK

- A. Provide all labor, material, tools, equipment, and supervision necessary to complete the installation of the VersiWeld reinforced TPO (Thermoplastic Polyolefin) reinforced membrane Adhered Roofing System including flashings and insulation as specified herein and as indicated on the drawings in accordance with the manufacturer's most current specifications and details.
- B. The roofing contractor shall be fully knowledgeable of all requirements of the contract documents and shall make themselves aware of all job site conditions that will affect their work.
- C. The roofing contractor shall confirm all given information and advise the building owner, prior to bid, of any conflicts that will affect their cost proposal.

- D. Any contractor who intends to submit a bid using a roofing system other than the approved manufacturer must submit for pre-qualification in writing fourteen (14) days prior to the bid date. Any contractor who fails to submit all information as requested will be subject to rejection. Bids stating "as per plans and specs" will be unacceptable.

1.03 SUBMITTALS

- A. Prior to starting work, the roofing contractor must submit the following:
1. Shop drawings showing layout, details of construction and identification of materials.
 2. A sample of the manufacturer's Membrane System Warranty.
 3. Submit a letter of certification from the manufacturer which certifies the roofing contractor is authorized to install the manufacturer's roofing system and lists foremen who have received training from the manufacturer along with the dates training was received.
 4. Certification from the membrane manufacturer indicating the membrane thickness over the reinforcing scrim (top ply membrane thickness) is nominal 15 mil or thicker.
 5. Certification of the manufacturer's warranty reserve.
- B. Upon completion of the installed work, submit copies of the manufacturer's final inspection to the specifier prior to the issuance of the manufacturer's warranty.

1.04 PRODUCT DELIVERY, STORAGE AND HANDLING

- A. Deliver materials to the job site in the manufacturer's original, unopened containers or wrappings with the manufacturer's name, brand name and installation instructions intact and legible. Deliver in sufficient quantity to permit work to continue without interruption.
- B. Comply with the manufacturer's written instructions for proper material storage.
1. Store VersiWeld membrane in the original undisturbed plastic wrap in a cool, shaded area. VersiWeld membrane that has been exposed to the elements for approximately 7 days must be prepared with Weathered Membrane Cleaner prior to hot air welding.
 2. Store curable materials (adhesives and sealants) between 60°F and 80°F in dry areas protected from water and direct sunlight. If exposed to lower temperature, restore to 60°F minimum temperature before using.
 3. Store materials containing solvents in dry, well ventilated spaces with proper fire and safety precautions. Keep lids on tight. Use before expiration of their shelf life.
- C. Insulation must be on pallets, off the ground and tightly covered with waterproof materials.
- D. Any materials which are found to be damaged shall be removed and replaced at the applicator's expense.

1.05 WORK SEQUENCE

- A. Schedule and execute work to prevent leaks and excessive traffic on completed roof sections. Care should be exercised to provide protection for the interior of the building and to ensure water does not flow beneath any completed sections of the membrane system.
- B. Do not disrupt activities in occupied spaces.

1.06 USE OF THE PREMISES

- A. Before beginning work, the roofing contractor must secure approval from the building owner's

representative for the following:

1. Areas permitted for personnel parking.
 2. Access to the site.
 3. Areas permitted for storage of materials and debris.
 4. Areas permitted for the location of cranes, hoists and chutes for loading and unloading materials to and from the roof.
- B. Interior stairs or elevators may not be used for removing debris or delivering materials, except as authorized by the building superintendent.

1.07 EXISTING CONDITIONS

If discrepancies are discovered between the existing conditions and those noted on the drawings, immediately notify the owner's representative by phone and solicit the manufacturer's approval prior to commencing with the work. Necessary steps shall be taken to make the building watertight until the discrepancies are resolved.

1.08 PRECONSTRUCTION CONFERENCE

- A. A mandatory pre-bid meeting will be held at the job site 201 E Broadway, Excelsior Springs, MO on July 17th 2018 at 10:00 am. Contact the owner's representative, Larry Murry, at 816-630-9593 if there are any questions.
- B. Prior to bid submittal, the roofing contractor should schedule a job site inspection to observe actual conditions and verify all dimensions on the roof. The job site inspection may occur on the day of the pre-bid meeting or prior to such a meeting. Should access to the roof be necessary before or after the pre-bid meeting, the contractor must contact the owner's representative, Larry Murry, at 816-630-9593 to coordinate an appropriate time.
- C. Bids must be forwarded to the following address no later than 2:00 pm July 31st 2018:

Hall of Waters
City Manager
201 E Broadway
Excelsior Springs, MO 64024
Attn: Larry Murry

- D. Any conditions which are not shown on the shop drawings should be indicated on a copy of the shop drawing and included with bid submittal if necessary to clarify any conditions not shown.

1.09 TEMPORARY FACILITIES AND CONTROLS

- A. Temporary Utilities:
1. Water, power for construction purposes and lighting are available at the site and will be made available to the roofing contractor.
 2. Provide all hoses, valves and connections for water from a source designated by the owner when made available.
 3. When available, electrical power should be extended as required from the source. Provide all trailers, connections and fused disconnects.
- B. Temporary, Sanitary Facilities

Sanitary facilities will not be available at the job site. The roofing contractor shall be responsible for the provision and maintenance of portable toilets or their equal.

C. Building Site:

1. The roofing contractor shall use reasonable care and responsibility to protect the building and site against damages. The contractor shall be responsible for the correction of any damage incurred as a result of the performance of the contract.
2. The roofing contractor shall remove all debris from the job site in a timely and legally acceptable manner so as to not detract from the aesthetics or the functions of the building.

D. Security:

Obey the owner's requirements for personnel identification, inspection and other security measures.

1.10 JOB SITE PROTECTION

- A. The roofing contractor shall adequately protect building, paved areas, service drives, lawn, shrubs, trees, etc. from damage while performing the required work. Provide canvas, boards and sheet metal (properly secured) as necessary for protection and remove protection material at completion. The contractor shall repair or be responsible for costs to repair all property damaged during the roofing application.
- B. During the roofing contractor's performance of the work, the building owner will continue to occupy the existing building. The contractor shall take precautions to prevent the spread of dust and debris, particularly where such material may sift into the building. The roofing contractor shall provide labor and materials to construct, maintain and remove necessary, temporary enclosures to prevent dust or debris in the construction area(s) from entering the remainder of the building.
- C. Do not overload any portion of the building, by either use of or placement of equipment, storage of debris, or storage of materials.
- D. Protect against fire and flame spread. Maintain proper and adequate fire extinguishers.
- E. Take precautions to prevent drains from clogging during the roofing application. Remove debris at the completion of each day's work and clean drains, if required. At completion, test drains to ensure the system is free running and drains are watertight. Remove strainers and plug drains in areas **where work is in progress**. Install flags or other telltales on plugs. Remove plugs each night and screen drain.
- F. Store moisture susceptible materials above ground and protect with waterproof coverings.
- G. Remove all traces of piled bulk material and return the job site to its original condition upon completion of the work.

1.11 SAFETY

The roofing contractor shall be responsible for all means and methods as they relate to safety and shall comply with all applicable local, state and federal requirements that are safety related. **Safety shall be the responsibility of the roofing contractor.** All related personnel shall be instructed daily to be mindful of the full time requirement to maintain a safe environment for the facility's occupants including staff, visitors, customers and the occurrence of the general public on or near the site.

1.12 WORKMANSHIP

- A. Applicators installing new roof, flashing and related work shall be factory trained and approved by the manufacturer they are representing.
- B. All work shall be of highest quality and in strict accordance with the manufacturer's published specifications and to the building owner's satisfaction.

- C. There shall be a supervisor on the job site at all times while work is in progress.

1.13 QUALITY ASSURANCE

- A. The membrane must be manufactured by the material supplier. Manufacturer's supplying membrane made by others are not acceptable.
- B. Unless otherwise noted in this specification, the roofing contractor must strictly comply with the manufacturer's current specifications and details.
- C. The roofing system must be installed by an applicator authorized and trained by the manufacturer in compliance with shop drawings as approved by the manufacturer. The roofing applicator shall be thoroughly experienced and upon request be able to provide evidence of having at least 5 years successful experience installing single-ply TPO roofing systems and having installed at least 1 roofing application or several similar systems of equal or greater size within one year.
- D. Provide adequate number of experienced workmen regularly engaged in this type of work who are skilled in the application techniques of the materials specified. Provide at least one thoroughly trained and experienced superintendent on the job at all times roofing work is in progress.
- E. There shall be no deviations made from this specification or the approved shop drawings without the prior written approval of the specifier. Any deviation from the manufacturer's installation procedures must be supported by a written certification on the manufacturer's letterhead and presented for the specifier's consideration.
- F. Upon completion of the installation, the applicator shall arrange for an inspection to be made by a non-sales technical representative of the membrane manufacturer in order to determine whether or not corrective work will be required before the warranty will be issued. Notify the building owner seventy-two (72) hours prior to the manufacturer's final inspection.

1.14 JOB CONDITIONS, CAUTIONS AND WARNINGS

Refer to Versico's VersiWeld Roofing System specification for General Job Site Considerations.

- A. Safety Data Sheets (SDS) must be on location at all times during the transportation, storage and application of materials.
- B. When positioning membrane sheets, exercise care to locate all field splices away from low spots and out of drain sumps. All field splices should be shingled to prevent bucking of water.
- C. When loading materials onto the roof, the Versico Authorized Roofing Contractor must comply with the requirements of the building owner to prevent overloading and possible disturbance to the building structure.
- D. Proceed with roofing work only when weather conditions are in compliance with the manufacturer's recommended limitations, and when conditions will permit the work to proceed in accordance with the manufacturer's requirements and recommendations.
- E. Proceed with work so new roofing materials are not subject to construction traffic. When necessary, new roof sections shall be protected and inspected upon completion for possible damage.
- F. Provide protection, such as 3/4 inch thick plywood, for all roof areas exposed to traffic during construction.

Plywood must be smooth and free of fasteners and splinters.

- G. The surface on which the insulation or roofing membrane is to be applied shall be clean, smooth, dry, and free of projections or contaminants that would prevent proper application of or be incompatible with the new installation, such as fins, sharp edges, foreign materials, oil and grease.
- H. New roofing shall be complete and weather tight at the end of the work day.
- I. Contaminants such as grease, fats and oils shall not be allowed to come in direct contact with the roofing membrane.

1.15 WARRANTY

- A. Provide manufacturer's 20 year Total System Warranty covering both labor and material with no dollar limitation. The maximum wind speed coverage shall be peak gusts of 72 mph measured at 10 meters above ground level. Certification is required with bid submittal indicating the manufacturer has reviewed and agreed to such wind coverage.
- B. Warranty shall also cover leaks caused by accidental punctures: 16 man-hours per year for 80-mil VersiWeld.
- C. Warranty shall also cover leaks caused by hail:
 - 1. Hail up to 2" diameter hail when 80-mil VersiWeld is installed over Versico Recovery Board, Dens Deck Prime, or Securock.
- D. Pro-rated System Warranties shall not be accepted.
- E. Evidence of the manufacturer's warranty reserve shall be included as part of the project submittals for the specifier's approval.

PART 2 PRODUCTS

2.01 GENERAL

- A. All components of the specified roofing system shall be products of Versico or accepted by Versico as compatible.
- B. All products (including insulation, fasteners, fastening plates, prefabricated accessories and edgings) must be **manufactured and/or supplied** by the roofing system manufacturer and covered by the warranty.

2.02 MEMBRANE

Basis for bid: Furnish Versico VersiWeld 80 mil thick gray reinforced TPO (Thermoplastic Polyolefin) membrane as needed to complete the roofing system. Membrane thickness over the reinforcing scrim (top-ply thickness) shall be nominal 15 mil thick or greater. Membrane sheets in rolls 12', 10' or 8' wide by 100' long.

Approved manufacturers

- 1. Versico
- 2. Carlisle SynTec
- 3. Or approved equal(must meet specifications to be considered)

2.03 INSULATION/UNDERLAYMENT

- A. When applicable, insulation shall be installed in multiple layers. The first and second layers of insulation shall be adhered to the existing roofing system in accordance with the manufacturer's published specifications.
- B. Base layer Insulation shall be Versico Securshield Polyiso as supplied by Versico. Minimum R-value required is R-25.
- C. Cover board shall be 1/2" Securshield HD Polyiso as supplied by Versico.
 - 1. **Versico SecurShield Polyisocyanurate**— A foam core insulation board covered on both sides with a coated glass fiber mat facer meeting ASTM C 1289-06, Type II, Class 2, Grade 2 (20 psi) or Grade 3 (25 psi). The product is available in 4' x 8' standard size with a thickness from 1 to 4 inches. 4' x 4' tapered panels are also available.
 - 2. **Versico SecurShield HD Cover Board**— a rigid insulation panel composed of a high-density, closed-cell polyisocyanurate foam core laminated to moisture resistant coated-glass fiber-mat facer for use as a cover board or recover board meeting ASTM 1289-06, Type II, Class 2 (100 psi). Available 1/2" thick 4' x 8' panel weight 11 lbs with an R-value of 2.5.

2.04 FASTENING COMPONENTS

To be used for mechanical attachment of insulation and to provide additional membrane securement:

A. Fasteners, Plates and Bars

- 1. **HPVX Fasteners:** A heavy duty #15 threaded fastener with a #3 phillips drive used for membrane or insulation securement into steel, wood plank or minimum 15/32 inch thick plywood when increased pullout resistance is desired.
- 2. **CD-10 Fasteners:** A non-threaded, hammer driven fastener used with structural concrete roof decks rated 3,000 psi or greater.
- 3. **MP 14-10 Fasteners:** A #14 threaded fastener with a #3 phillips drive used for minimum 3,000 psi concrete decks.
- 4. **Term Bar Nail-Ins:** A 1-1/4" long expansion anchor with a zinc plated steel drive pin used for fastening the Versico Termination Bar or Seam Fastening Plates to concrete, brick, or block walls.
- 5. **HPVX Plates:** A 2-3/8" diameter metal barbed fastening plate used with Versico HPVX or MP-14-10 Fasteners for membrane securement. This plate can be used for insulation securement.
- 6. **Insulation Fastening Plates:** a nominal 3 inch diameter plastic or metal plate used for insulation attachment.
- 7. **VersiWeld Pressure-Sensitive RUSS™** (Reinforced Universal Securement Strip): a 6" wide, nominal 45-mil thick reinforced TPO membrane with 3" wide Pressure Sensitive Tape laminated along one edge. The 6" wide Pressure-Sensitive RUSS is used horizontally at the base of walls, curbs, etc., in conjunction with 2" diameter Seam Fastening Plates below the TPO deck membrane for additional membrane securement.

- a. **6" wide Pressure-Sensitive RUSS** is used horizontally or vertically at the base of walls, curbs, etc., in conjunction with PiranhaFastening Plates below the TPO deck membrane for additional membrane securement.
- b. **10" wide Pressure-Sensitive RUSS** is for perimeter membrane securement.

B. Insulation Adhesive:

1. **Flexible DASH Adhesive:** A two component insulating urethane adhesive used to attach insulation. Packaging formats include 50 and 15 gallon drums as well as Dual Tanks, Dual Cartridges and 5 gallon Jug formats.

2.05 ADHESIVES, CLEANERS AND SEALANTS

All products shall be furnished by Versico and specifically formulated for the intended purpose.

A. VersiWeld Bonding Adhesive: A high-strength, synthetic rubber adhesive used for bonding VersiWeld membrane to various surfaces. The adhesive is applied to both the membrane and the substrate at a coverage rate of approximately 60 square feet per gallon per finished surface (includes coverage on both surfaces).

B. CAV-GRIP 3V Low-VOC Aerosol Contact Adhesive/Primer: a low-VOC, methylene chloride-free adhesive that can be used for a variety of applications including: bonding Sure-Weld membrane to various surfaces, enhancing the bond between Versico's VapAir Seal 725TR and various substrates, priming unexposed asphalt prior to applying DASH Adhesive and for adhering VersiWeld/VersiFlex FleeceBACK and VersiWeld TPO membrane to vertical walls. Coverage rate is approximately 2,000 sq. ft. per cylinder as a primer, in a single-sided application and 1,000 sq. ft. per cylinder as an adhesive, in a double-sided application.

C. Cut-Edge Sealant: A white or clear colored sealant used to seal cut edges of reinforced VersiWeld membrane. A coverage rate of approximately 225 - 275 linear feet per squeeze bottle can be achieved when a 1/8" diameter bead is applied.

D. Water Cut-Off Mastic: Used as a mastic to prevent moisture migration at drains, compression terminations and beneath conventional metal edging (at a coverage rate of approximately 10' per tube or 100' per gallon).

E. Universal Single-Ply Sealant: A 100% solids, solvent free, voc free, one part polyether sealant that provides a weather tight seal to a variety of building materials. It is white in color and is used for general caulking such as above termination bars and metal counter flashings and at scuppers.

F. Thermoplastic One-Part Pourable Sealer: A one-part, moisture curing, elastomeric polyether sealant used to fill TPO Molded Pourable Sealant Pockets. Packaged in 4, 2-liter foil pouches inside a reusable plastic bucket. 1 pouch will fill 2 TPO Molded Pourable Sealant Pockets.

G. Weathered Membrane Cleaner: Used to prepare membrane for heat welding that has been exposed to the elements or to remove general construction dirt at an approximate coverage rate of 400 square feet per gallon (one surface).

H. TPO Primer: A solvent-based primer used to prepare the surface of VersiWeld Membrane prior to application of Pressure-Sensitive Coverstrip and TPO Pressure-Sensitive RUSS.

- I. **Cav-Grip Primer:** a low VOC contact adhesive used to prime surfaces **prior to the application of 725TR.**
- J. **CAV-GRIP 3V Low-VOC Aerosol Contact Adhesive/Primer:** a low-VOC, methylene chloride-free adhesive that can be used for a variety of applications including: bonding VersiWeld membrane to various surfaces, enhancing the bond between Versico's VapAir Seal 725TR and various substrates, priming unexposed asphalt prior to applying DASH Adhesive and for adhering VersiGard FleeceBACK and VersiGard EPDM membrane to vertical walls. Coverage rate is approximately 2,000 sq. ft. per cylinder as a primer, in a single-sided application and 1,000 sq. ft. per cylinder as an adhesive, in a double-sided application.

2.06 METAL EDGING AND MEMBRANE TERMINATIONS

- A. **General:** All metal edging shall be tested and meet ANSI/SPRI ES-1 standards and comply with International Building Code.
- E. **Drip Edge:** a metal fascia/edge system with a 22 or 24 gauge continuous anchor cleat and .032 inch thick aluminum or 24 gauge steel fascia. Metal fascia color shall be as designated by the Owner's Representative.
- F. **Termination Bar:** a 1" wide and .098" thick extruded aluminum bar pre-punched 6" on center; incorporates a sealant ledge to support Lap Sealant and provide increased stability for membrane terminations.

2.07 WALKWAYS

Protective surfacing for roof traffic shall be VersiWeld TPO Walkway Rolls installed per manufacturer's requirements or concrete pavers loose laid over an approved slip sheet (pavers not recommended for slopes greater than 2" in 12").

PART 3 EXECUTION

3.01 GENERAL

- A. Comply with the manufacturer's published instructions for the installation of the membrane roofing system including proper substrate preparation, job site considerations and weather restrictions.
- B. Position sheets to accommodate contours of the roof deck and shingle splices to avoid bucking water.

3.03 INSULATION PLACEMENT AND ATTACHMENT

- A. Install insulation or membrane underlayment over the substrate with boards butted tightly together with no joints or gaps greater than 1/4 inch. Stagger joints horizontally and vertically if multiple layers are provided.
- B. Secure insulation to the substrate with the required mechanical fasteners or insulation adhesive Flexible Dash Adhesive in accordance with the manufacturer's specifications.

3.04 MEMBRANE PLACEMENT AND ATTACHMENT

- A. Position VersiWeld membrane over the acceptable substrate. Fold membrane sheet back onto itself so half

the underside of the membrane is exposed.

- B. Apply Bonding Adhesive in accordance with the manufacturer's published instructions, to the exposed underside of the membrane and the corresponding substrate area. Do not apply Bonding Adhesive along the splice edge of the membrane to be hot air welded over the adjoining sheet. Allow the adhesive to dry until it is tacky but will not string or stick to a dry finger touch.
 - 1. Roll the coated membrane into the coated substrate while avoiding wrinkles. Brush down the bonded section of the membrane sheet immediately after rolling the membrane into the adhesive with a soft bristle push broom to achieve maximum contact.
 - 2. Fold back the unbonded half of the sheet and repeat the bonding procedures.
- C. Position adjoining sheets to allow a minimum overlap of 2 inches to provide a minimum 1-1/2" hot air weld.
- D. Continue to install adjoining membrane sheets in the same manner, overlapping edges a minimum of 2 inches and complete the bonding procedures as stated previously.

3.05 MEMBRANE HOT AIR WELDING PROCEDURES

- A. Hot air weld the VersiWeld membrane using an Automatic Hot Air Welding Machine or Hot Air Hand Welder in accordance with the manufacturer's specifications. At all splice intersections, roll the seam with a silicone roller immediately after welder crossed the membrane step-off to ensure a continuous hot air welded seam.

Note: When using 60-mil thick or thicker membrane, all splice intersections shall be overlaid with VersiWeld T-joint covers or non-reinforced flashing.

- B. Probe all seams once the hot air welds have thoroughly cooled (approximately 30 minutes).
- C. Repair all seam deficiencies the same day they are discovered.
- E. Apply Cut Edge Sealant on all cut edges of reinforced membrane (where the scrim reinforcement is exposed) after seam probing is complete. Cut Edge Sealant is not required on vertical splices.

3.06 FLASHING

- A. Flashing of parapets, curbs, expansion joints and other parts of the roof must be performed using VersiWeld reinforced membrane. VersiWeld non-reinforced membrane can be used for flashing pipe penetrations, Sealant Pockets, and scuppers, as well as inside and outside corners, when the use of prefabricated accessories is not feasible.
- B. Follow manufacturer's typical flashing procedures for all wall, curb, and penetration flashing including metal edging/coping and roof drain applications.

3.07 WALKWAYS

- A. Install walkways at all traffic concentration points (such as roof hatches, access doors, rooftop ladders, etc.) and all locations as identified on the specifier's drawing.

3.08 DAILY SEAL

- A. On phased roofing, when the completion of flashings and terminations is not achieved by the end of the work day, a daily seal must be performed to temporarily close the membrane to prevent water infiltration.
- B. Complete an acceptable membrane seal in accordance with the manufacturer's requirements.

3.09 CLEAN UP

- A. Perform daily clean up to collect all wrappings, empty containers, paper, and other debris from the project site. Upon completion, all debris must be disposed of in a legally acceptable manner.
- B. Prior to the manufacturer's inspection for warranty, the applicator must perform a pre-inspection to review all work and to verify all flashing has been completed as well as the application of all caulking.

END OF SPECIFICATION

Hall of Waters City Hall East Excelsior Springs, MO Roofing Project

PART 1 GENERAL

1.01 DESCRIPTION

- A. The City Hall East Hall of Waters is located at in Excelsior Springs, MO. Larry Murry, Project Manager/Coordinator, is the Owner's Representative and may be contacted regarding any questions or for a pre-bid job site inspection, phone 816-630-9593.
- B. The project consists of installing Versico's VersiWeld (TPO) Adhered Roofing System as outlined below:

Remove all existing gravel from roof area. Any existing wet insulation shall be removed and replaced with like material. Apply the VersiWeld Adhered Roofing System in conjunction with Versico 1/2" HD and Versico ISO insulation installed over the existing BUR roof using Cav Grip 3V and Flexible Dash Adhesive.

1.02 EXTENT OF WORK

- A. Provide all labor, material, tools, equipment, and supervision necessary to complete the installation of the VersiWeld reinforced TPO (Thermoplastic Polyolefin) reinforced membrane Adhered Roofing System including flashings and insulation as specified herein and as indicated on the drawings in accordance with the manufacturer's most current specifications and details.
- B. The roofing contractor shall be fully knowledgeable of all requirements of the contract documents and shall make themselves aware of all job site conditions that will affect their work.
- C. The roofing contractor shall confirm all given information and advise the building owner, prior to bid, of any conflicts that will affect their cost proposal.

- D. Any contractor who intends to submit a bid using a roofing system other than the approved manufacturer must submit for pre-qualification in writing fourteen (14) days prior to the bid date. Any contractor who fails to submit all information as requested will be subject to rejection. Bids stating "as per plans and specs" will be unacceptable.

1.03 SUBMITTALS

- A. Prior to starting work, the roofing contractor must submit the following:
1. Shop drawings showing layout, details of construction and identification of materials.
 2. A sample of the manufacturer's Membrane System Warranty.
 3. Submit a letter of certification from the manufacturer which certifies the roofing contractor is authorized to install the manufacturer's roofing system and lists foremen who have received training from the manufacturer along with the dates training was received.
 4. Certification from the membrane manufacturer indicating the membrane thickness over the reinforcing scrim (top ply membrane thickness) is nominal 15 mil or thicker.
 5. Certification of the manufacturer's warranty reserve.
- B. Upon completion of the installed work, submit copies of the manufacturer's final inspection to the specifier prior to the issuance of the manufacturer's warranty.

1.04 PRODUCT DELIVERY, STORAGE AND HANDLING

- A. Deliver materials to the job site in the manufacturer's original, unopened containers or wrappings with the manufacturer's name, brand name and installation instructions intact and legible. Deliver in sufficient quantity to permit work to continue without interruption.
- B. Comply with the manufacturer's written instructions for proper material storage.
1. Store VersiWeld membrane in the original undisturbed plastic wrap in a cool, shaded area. VersiWeld membrane that has been exposed to the elements for approximately 7 days must be prepared with Weathered Membrane Cleaner prior to hot air welding.
 2. Store curable materials (adhesives and sealants) between 60°F and 80°F in dry areas protected from water and direct sunlight. If exposed to lower temperature, restore to 60°F minimum temperature before using.
 3. Store materials containing solvents in dry, well ventilated spaces with proper fire and safety precautions. Keep lids on tight. Use before expiration of their shelf life.
- C. Insulation must be on pallets, off the ground and tightly covered with waterproof materials.
- D. Any materials which are found to be damaged shall be removed and replaced at the applicator's expense.

1.05 WORK SEQUENCE

- A. Schedule and execute work to prevent leaks and excessive traffic on completed roof sections. Care should be exercised to provide protection for the interior of the building and to ensure water does not flow beneath any completed sections of the membrane system.
- B. Do not disrupt activities in occupied spaces.

1.06 USE OF THE PREMISES

- A. Before beginning work, the roofing contractor must secure approval from the building owner's

representative for the following:

1. Areas permitted for personnel parking.
 2. Access to the site.
 3. Areas permitted for storage of materials and debris.
 4. Areas permitted for the location of cranes, hoists and chutes for loading and unloading materials to and from the roof.
- B. Interior stairs or elevators may not be used for removing debris or delivering materials, except as authorized by the building superintendent.

1.07 EXISTING CONDITIONS

If discrepancies are discovered between the existing conditions and those noted on the drawings, immediately notify the owner's representative by phone and solicit the manufacturer's approval prior to commencing with the work. Necessary steps shall be taken to make the building watertight until the discrepancies are resolved.

1.08 PRECONSTRUCTION CONFERENCE

- A. A mandatory pre-bid meeting will be held at the job site at 201 E Broadway, Excelsior Springs, MO on July 17th 2018 at 10:00 am. Contact the owner's representative, Larry Murry, at 816-630-9593 if there are any questions.
- B. Prior to bid submittal, the roofing contractor should schedule a job site inspection to observe actual conditions and verify all dimensions on the roof. The job site inspection may occur on the day of the pre-bid meeting or prior to such a meeting. Should access to the roof be necessary before or after the pre-bid meeting, the contractor must contact the owner's representative, Larry Murry, at 816-630-9593 to coordinate an appropriate time.
- C. Bids must be forwarded to the following address no later than 2:00 pm July 31st 2018:

Hall of Waters
City Manager
201 E Broadway
Excelsior Springs, MO 64024
Attn: Larry Murry

- D. Any conditions which are not shown on the shop drawings should be indicated on a copy of the shop drawing and included with bid submittal if necessary to clarify any conditions not shown.

1.09 TEMPORARY FACILITIES AND CONTROLS

- A. Temporary Utilities:
1. Water, power for construction purposes and lighting are available at the site and will be made available to the roofing contractor.
 2. Provide all hoses, valves and connections for water from a source designated by the owner when made available.
 3. When available, electrical power should be extended as required from the source. Provide all trailers, connections and fused disconnects.
- B. Temporary, Sanitary Facilities

Sanitary facilities will not be available at the job site. The roofing contractor shall be responsible for the provision and maintenance of portable toilets or their equal.

C. Building Site:

1. The roofing contractor shall use reasonable care and responsibility to protect the building and site against damages. The contractor shall be responsible for the correction of any damage incurred as a result of the performance of the contract.
2. The roofing contractor shall remove all debris from the job site in a timely and legally acceptable manner so as to not detract from the aesthetics or the functions of the building.

D. Security:

Obeey the owner's requirements for personnel identification, inspection and other security measures.

1.10 JOB SITE PROTECTION

- A. The roofing contractor shall adequately protect building, paved areas, service drives, lawn, shrubs, trees, etc. from damage while performing the required work. Provide canvas, boards and sheet metal (properly secured) as necessary for protection and remove protection material at completion. The contractor shall repair or be responsible for costs to repair all property damaged during the roofing application.
- B. During the roofing contractor's performance of the work, the building owner will continue to occupy the existing building. The contractor shall take precautions to prevent the spread of dust and debris, particularly where such material may sift into the building. The roofing contractor shall provide labor and materials to construct, maintain and remove necessary, temporary enclosures to prevent dust or debris in the construction area(s) from entering the remainder of the building.
- C. Do not overload any portion of the building, by either use of or placement of equipment, storage of debris, or storage of materials.
- D. Protect against fire and flame spread. Maintain proper and adequate fire extinguishers.
- E. Take precautions to prevent drains from clogging during the roofing application. Remove debris at the completion of each day's work and clean drains, if required. At completion, test drains to ensure the system is free running and drains are watertight. Remove strainers and plug drains in areas **where work is in progress**. Install flags or other telltales on plugs. Remove plugs each night and screen drain.
- F. Store moisture susceptible materials above ground and protect with waterproof coverings.
- G. Remove all traces of piled bulk material and return the job site to its original condition upon completion of the work.

1.11 SAFETY

The roofing contractor shall be responsible for all means and methods as they relate to safety and shall comply with all applicable local, state and federal requirements that are safety related. **Safety shall be the responsibility of the roofing contractor.** All related personnel shall be instructed daily to be mindful of the full time requirement to maintain a safe environment for the facility's occupants including staff, visitors, customers and the occurrence of the general public on or near the site.

1.12 WORKMANSHIP

- A. Applicators installing new roof, flashing and related work shall be factory trained and approved by the manufacturer they are representing.
- B. All work shall be of highest quality and in strict accordance with the manufacturer's published specifications and to the building owner's satisfaction.

- C. There shall be a supervisor on the job site at all times while work is in progress.

1.13 QUALITY ASSURANCE

- A. The membrane must be manufactured by the material supplier. Manufacturer's supplying membrane made by others are not acceptable.
- B. Unless otherwise noted in this specification, the roofing contractor must strictly comply with the manufacturer's current specifications and details.
- C. The roofing system must be installed by an applicator authorized and trained by the manufacturer in compliance with shop drawings as approved by the manufacturer. The roofing applicator shall be thoroughly experienced and upon request be able to provide evidence of having at least 5 years successful experience installing single-ply TPO roofing systems and having installed at least 1 roofing application or several similar systems of equal or greater size within one year.
- D. Provide adequate number of experienced workmen regularly engaged in this type of work who are skilled in the application techniques of the materials specified. Provide at least one thoroughly trained and experienced superintendent on the job at all times roofing work is in progress.
- E. There shall be no deviations made from this specification or the approved shop drawings without the prior written approval of the specifier. Any deviation from the manufacturer's installation procedures must be supported by a written certification on the manufacturer's letterhead and presented for the specifier's consideration.
- F. Upon completion of the installation, the applicator shall arrange for an inspection to be made by a non-sales technical representative of the membrane manufacturer in order to determine whether or not corrective work will be required before the warranty will be issued. Notify the building owner seventy-two (72) hours prior to the manufacturer's final inspection.

1.14 JOB CONDITIONS, CAUTIONS AND WARNINGS

Refer to Versico's VersiWeld Roofing System specification for General Job Site Considerations.

- A. Safety Data Sheets (SDS) must be on location at all times during the transportation, storage and application of materials.
- B. When positioning membrane sheets, exercise care to locate all field splices away from low spots and out of drain sumps. All field splices should be shingled to prevent bucking of water.
- C. When loading materials onto the roof, the Versico Authorized Roofing Contractor must comply with the requirements of the building owner to prevent overloading and possible disturbance to the building structure.
- D. Proceed with roofing work only when weather conditions are in compliance with the manufacturer's recommended limitations, and when conditions will permit the work to proceed in accordance with the manufacturer's requirements and recommendations.
- E. Proceed with work so new roofing materials are not subject to construction traffic. When necessary, new roof sections shall be protected and inspected upon completion for possible damage.
- F. Provide protection, such as 3/4 inch thick plywood, for all roof areas exposed to traffic during construction.

Plywood must be smooth and free of fasteners and splinters.

- G. The surface on which the insulation or roofing membrane is to be applied shall be clean, smooth, dry, and free of projections or contaminants that would prevent proper application of or be incompatible with the new installation, such as fins, sharp edges, foreign materials, oil and grease.
- H. New roofing shall be complete and weather tight at the end of the work day.
- I. Contaminants such as grease, fats and oils shall not be allowed to come in direct contact with the roofing membrane.

1.15 WARRANTY

- A. Provide manufacturer's 20 year Total System Warranty covering both labor and material with no dollar limitation. The maximum wind speed coverage shall be peak gusts of 72 mph measured at 10 meters above ground level. Certification is required with bid submittal indicating the manufacturer has reviewed and agreed to such wind coverage.
- B. Warranty shall also cover leaks caused by accidental punctures: 16 man-hours per year for 80-mil VersiWeld.
- C. Warranty shall also cover leaks caused by hail:
 - 1. Hail up to 2" diameter hail when 80-mil VersiWeld is installed over Versico Recovery Board, Dens Deck Prime, or Securock.
- D. Pro-rated System Warranties shall not be accepted.
- E. Evidence of the manufacturer's warranty reserve shall be included as part of the project submittals for the specifier's approval.

PART 2 PRODUCTS

2.01 GENERAL

- A. All components of the specified roofing system shall be products of Versico or accepted by Versico as compatible.
- B. All products (including insulation, fasteners, fastening plates, prefabricated accessories and edgings) must be **manufactured and/or supplied** by the roofing system manufacturer and covered by the warranty.

2.02 MEMBRANE

Basis for bid: Furnish Versico VersiWeld 80 mil thick gray reinforced TPO (Thermoplastic Polyolefin) membrane as needed to complete the roofing system. Membrane thickness over the reinforcing scrim (top-ply thickness) shall be nominal 15 mil thick or greater. Membrane sheets in rolls 12', 10' or 8' wide by 100' long.

Approved manufacturers

- 1. Versico
- 2. Carlisle SynTec
- 3. Or approved equal(must meet specifications to be considered)

2.03 INSULATION/UNDERLAYMENT

- A. When applicable, insulation shall be installed in multiple layers. The first and second layers of insulation shall be adhered to the existing roofing system in accordance with the manufacturer's published specifications.
- B. Base layer Insulation shall be Versico Securshield Polyiso as supplied by Versico. Minimum R-value required is R-25.
- C. Cover board shall be 1/2" Securshield HD Polyiso as supplied by Versico.
 - 1. **Versico SecurShield Polyisocyanurate**– A foam core insulation board covered on both sides with a coated glass fiber mat facer meeting ASTM C 1289-06, Type II, Class 2, Grade 2 (20 psi) or Grade 3 (25 psi). The product is available in 4' x 8' standard size with a thickness from 1 to 4 inches. 4' x 4' tapered panels are also available.
 - 2. **Versico SecurShield HD Cover Board**– a rigid insulation panel composed of a high-density, closed-cell polyisocyanurate foam core laminated to moisture resistant coated-glass fiber-mat facer for use as a cover board or recover board meeting ASTM 1289-06, Type II, Class 2 (100 psi). Available 1/2" thick 4' x 8' panel weight 11 lbs with an R-value of 2.5.

2.04 FASTENING COMPONENTS

To be used for mechanical attachment of insulation and to provide additional membrane securement:

A. Fasteners, Plates and Bars

- 1. **HPVX Fasteners:** A heavy duty #15 threaded fastener with a #3 phillips drive used for membranre or insulation securement into steel, wood plank or minimum 15/32 inch thick plywood when increased pullout resistance is desired.
- 2. **CD-10 Fasteners:** A non-threaded, hammer driven fastener used with structural concrete roof decks rated 3,000 psi or greater.
- 3. **MP 14-10 Fasteners:** A #14 threaded fastener with a #3 phillips drive used for minimum 3,000 psi concrete decks.
- 4. **Term Bar Nail-Ins:** A 1-1/4" long expansion anchor with a zinc plated steel drive pin used for fastening the Versico Termination Bar or Seam Fastening Plates to concrete, brick, or block walls.
- 5. **HPVX Plates:** A 2-3/8" diameter metal barbed fastening plate used with Versico HPVX or MP-14-10 Fasteners for membrane securement. This plate can be used for insulation securement.
- 6. **Insulation Fastening Plates:** a nominal 3 inch diameter plastic or metal plate used for insulation attachment.
- 7. **VersiWeld Pressure-Sensitive RUSS™** (Reinforced Universal Securement Strip): a 6" wide, nominal 45-mil thick reinforced TPO membrane with 3" wide Pressure Sensitive Tape laminated along one edge. The 6" wide Pressure-Sensitive RUSS is used horizontally at the base of walls, curbs, etc., in conjunction with 2" diameter Seam Fastening Plates below the TPO deck membrane for additional membrane securement.

- a. **6" wide Pressure-Sensitive RUSS** is used horizontally or vertically at the base of walls, curbs, etc., in conjunction with PiranhaFastening Plates below the TPO deck membrane for additional membrane securement.
- b. **10" wide Pressure-Sensitive RUSS** is for perimeter membrane securement.

B. Insulation Adhesive:

1. **Flexible DASH Adhesive:** A two component insulating urethane adhesive used to attach insulation. Packaging formats include 50 and 15 gallon drums as well as Dual Tanks, Dual Cartridges and 5 gallon Jug formats.

2.05 ADHESIVES, CLEANERS AND SEALANTS

All products shall be furnished by Versico and specifically formulated for the intended purpose.

A. VersiWeld Bonding Adhesive: A high-strength, synthetic rubber adhesive used for bonding VersiWeld membrane to various surfaces. The adhesive is applied to both the membrane and the substrate at a coverage rate of approximately 60 square feet per gallon per finished surface (includes coverage on both surfaces).

B. CAV-GRIP 3V Low-VOC Aerosol Contact Adhesive/Primer: a low-VOC, methylene chloride-free adhesive that can be used for a variety of applications including: bonding Sure-Weld membrane to various surfaces, enhancing the bond between Versico's VapAir Seal 725TR and various substrates, priming unexposed asphalt prior to applying DASH Adhesive and for adhering VersiWeld/VersiFlex FleeceBACK and VersiWeld TPO membrane to vertical walls. Coverage rate is approximately 2,000 sq. ft. per cylinder as a primer, in a single-sided application and 1,000 sq. ft. per cylinder as an adhesive, in a double-sided application.

C. Cut-Edge Sealant: A white or clear colored sealant used to seal cut edges of reinforced VersiWeld membrane. A coverage rate of approximately 225 - 275 linear feet per squeeze bottle can be achieved when a 1/8" diameter bead is applied.

D. Water Cut-Off Mastic: Used as a mastic to prevent moisture migration at drains, compression terminations and beneath conventional metal edging (at a coverage rate of approximately 10' per tube or 100' per gallon).

E. Universal Single-Ply Sealant: A 100% solids, solvent free, voc free, one part polyether sealant that provides a weather tight seal to a variety of building materials. It is white in color and is used for general caulking such as above termination bars and metal counter flashings and at scuppers.

F. Thermoplastic One-Part Pourable Sealer: A one-part, moisture curing, elastomeric polyether sealant used to fill TPO Molded Pourable Sealant Pockets. Packaged in 4, 2-liter foil pouches inside a reusable plastic bucket. 1 pouch will fill 2 TPO Molded Pourable Sealant Pockets.

G. Weathered Membrane Cleaner: Used to prepare membrane for heat welding that has been exposed to the elements or to remove general construction dirt at an approximate coverage rate of 400 square feet per gallon (one surface).

H. TPO Primer: A solvent-based primer used to prepare the surface of VersiWeld Membrane prior to application of Pressure-Sensitive Coverstrip and TPO Pressure-Sensitive RUSS.

- I. **Cav-Grip Primer:** a low VOC contact adhesive used to prime surfaces prior to the application of 725TR.
- J. **CAV-GRIP 3V Low-VOC Aerosol Contact Adhesive/Primer:** a low-VOC, methylene chloride-free adhesive that can be used for a variety of applications including: bonding VersiWeld membrane to various surfaces, enhancing the bond between Versico's VapAir Seal 725TR and various substrates, priming unexposed asphalt prior to applying DASH Adhesive and for adhering VersiGard FleeceBACK and VersiGard EPDM membrane to vertical walls. Coverage rate is approximately 2,000 sq. ft. per cylinder as a primer, in a single-sided application and 1,000 sq. ft. per cylinder as an adhesive, in a double-sided application.

2.06 METAL EDGING AND MEMBRANE TERMINATIONS

- A. **General:** All metal edging shall be tested and meet ANSI/SPRI ES-1 standards and comply with International Building Code.
- E. **Drip Edge:** a metal fascia/edge system with a 22 or 24 gauge continuous anchor cleat and .032 inch thick aluminum or 24 gauge steel fascia. Metal fascia color shall be as designated by the Owner's Representative.
- F. **Termination Bar:** a 1" wide and .098" thick extruded aluminum bar pre-punched 6" on center; incorporates a sealant ledge to support Lap Sealant and provide increased stability for membrane terminations.

2.07 WALKWAYS

Protective surfacing for roof traffic shall be VersiWeld TPO Walkway Rolls installed per manufacturer's requirements or concrete pavers loose laid over an approved slip sheet (pavers not recommended for slopes greater than 2" in 12").

PART 3 EXECUTION

3.01 GENERAL

- A. Comply with the manufacturer's published instructions for the installation of the membrane roofing system including proper substrate preparation, job site considerations and weather restrictions.
- B. Position sheets to accommodate contours of the roof deck and shingle splices to avoid bucking water.

3.03 INSULATION PLACEMENT AND ATTACHMENT

- A. Install insulation or membrane underlayment over the substrate with boards butted tightly together with no joints or gaps greater than 1/4 inch. Stagger joints horizontally and vertically if multiple layers are provided.
- B. Secure insulation to the substrate with the required mechanical fasteners or insulation adhesive Flexible Dash Adhesive in accordance with the manufacturer's specifications.

3.04 MEMBRANE PLACEMENT AND ATTACHMENT

- A. Position VersiWeld membrane over the acceptable substrate. Fold membrane sheet back onto itself so half

the underside of the membrane is exposed.

- B. Apply Bonding Adhesive in accordance with the manufacturer's published instructions, to the exposed underside of the membrane and the corresponding substrate area. Do not apply Bonding Adhesive along the splice edge of the membrane to be hot air welded over the adjoining sheet. Allow the adhesive to dry until it is tacky but will not string or stick to a dry finger touch.
 - 1. Roll the coated membrane into the coated substrate while avoiding wrinkles. Brush down the bonded section of the membrane sheet immediately after rolling the membrane into the adhesive with a soft bristle push broom to achieve maximum contact.
 - 2. Fold back the unbonded half of the sheet and repeat the bonding procedures.
- C. Position adjoining sheets to allow a minimum overlap of 2 inches to provide a minimum 1-1/2" hot air weld.
- D. Continue to install adjoining membrane sheets in the same manner, overlapping edges a minimum of 2 inches and complete the bonding procedures as stated previously.

3.05 MEMBRANE HOT AIR WELDING PROCEDURES

- A. Hot air weld the VersiWeld membrane using an Automatic Hot Air Welding Machine or Hot Air Hand Welder in accordance with the manufacturer's specifications. At all splice intersections, roll the seam with a silicone roller immediately after welder crossed the membrane step-off to ensure a continuous hot air welded seam.

Note: When using 60-mil thick or thicker membrane, all splice intersections shall be overlaid with VersiWeld T-joint covers or non-reinforced flashing.
- B. Probe all seams once the hot air welds have thoroughly cooled (approximately 30 minutes).
- C. Repair all seam deficiencies the same day they are discovered.
- E. Apply Cut Edge Sealant on all cut edges of reinforced membrane (where the scrim reinforcement is exposed) after seam probing is complete. Cut Edge Sealant is not required on vertical splices.

3.06 FLASHING

- A. Flashing of parapets, curbs, expansion joints and other parts of the roof must be performed using VersiWeld reinforced membrane. VersiWeld non-reinforced membrane can be used for flashing pipe penetrations, Sealant Pockets, and scuppers, as well as inside and outside corners, when the use of prefabricated accessories is not feasible.
- B. Follow manufacturer's typical flashing procedures for all wall, curb, and penetration flashing including metal edging/coping and roof drain applications.

3.07 WALKWAYS

- A. Install walkways at all traffic concentration points (such as roof hatches, access doors, rooftop ladders, etc.) and all locations as identified on the specifier's drawing.

3.08 DAILY SEAL

- A. On phased roofing, when the completion of flashings and terminations is not achieved by the end of the work day, a daily seal must be performed to temporarily close the membrane to prevent water infiltration.
- B. Complete an acceptable membrane seal in accordance with the manufacturer's requirements.

3.09 CLEAN UP

- A. Perform daily clean up to collect all wrappings, empty containers, paper, and other debris from the project site. Upon completion, all debris must be disposed of in a legally acceptable manner.
- B. Prior to the manufacturer's inspection for warranty, the applicator must perform a pre-inspection to review all work and to verify all flashing has been completed as well as the application of all caulking.

END OF SPECIFICATION

Old Community Center Excelsior Springs, MO Roofing Project

PART 1 GENERAL

1.01 DESCRIPTION

- A. The Old Community Center is located at 112 S Thompson in Excelsior Springs, MO. Larry Murry, Project Manager/Coordinator, is the Owner's Representative and may be contacted regarding any questions or for a pre-bid job site inspection, phone 816-630-9593.
- B. The project consists of installing Versico's VersiWeld (TPO) Adhered Roofing System as outlined below:

Apply the VersiWeld Adhered Roofing System in conjunction with Versico ISO mechanically fastened to deck and Versico 1/2" HD ISO installed in Flexable Dash adhesive after tear off of the existing roof to expose the wood deck for verification of suitable substrate as specified in this specification.

1.02 EXTENT OF WORK

- A. Provide all labor, material, tools, equipment, and supervision necessary to complete the installation of the VersiWeld reinforced TPO (Thermoplastic Polyolefin) reinforced membrane Adhered Roofing System including flashings and insulation as specified herein and as indicated on the drawings in accordance with the manufacturer's most current specifications and details.
- B. The roofing contractor shall be fully knowledgeable of all requirements of the contract documents and shall make themselves aware of all job site conditions that will affect their work.
- C. The roofing contractor shall confirm all given information and advise the building owner, prior to bid, of any conflicts that will affect their cost proposal.

- D. Any contractor who intends to submit a bid using a roofing system other than the approved manufacturer must submit for pre-qualification in writing fourteen (14) days prior to the bid date. Any contractor who fails to submit all information as requested will be subject to rejection. Bids stating "as per plans and specs" will be unacceptable.

1.03 SUBMITTALS

- A. Prior to starting work, the roofing contractor must submit the following:
 - 1. Shop drawings showing layout, details of construction and identification of materials.
 - 2. A sample of the manufacturer's Membrane System Warranty.
 - 3. Submit a letter of certification from the manufacturer which certifies the roofing contractor is authorized to install the manufacturer's roofing system and lists foremen who have received training from the manufacturer along with the dates training was received.
 - 4. Certification from the membrane manufacturer indicating the membrane thickness over the reinforcing scrim (top ply membrane thickness) is nominal 15 mil or thicker.
 - 5. Certification of the manufacturer's warranty reserve.
- B. Upon completion of the installed work, submit copies of the manufacturer's final inspection to the specifier prior to the issuance of the manufacturer's warranty.

1.04 PRODUCT DELIVERY, STORAGE AND HANDLING

- A. Deliver materials to the job site in the manufacturer's original, unopened containers or wrappings with the manufacturer's name, brand name and installation instructions intact and legible. Deliver in sufficient quantity to permit work to continue without interruption.
- B. Comply with the manufacturer's written instructions for proper material storage.
 - 1. Store VersiWeld membrane in the original undisturbed plastic wrap in a cool, shaded area. VersiWeld membrane that has been exposed to the elements for approximately 7 days must be prepared with Weathered Membrane Cleaner prior to hot air welding.
 - 2. Store curable materials (adhesives and sealants) between 60°F and 80°F in dry areas protected from water and direct sunlight. If exposed to lower temperature, restore to 60°F minimum temperature before using.
 - 3. Store materials containing solvents in dry, well ventilated spaces with proper fire and safety precautions. Keep lids on tight. Use before expiration of their shelf life.
- C. Insulation must be on pallets, off the ground and tightly covered with waterproof materials.
- D. Any materials which are found to be damaged shall be removed and replaced at the applicator's expense.

1.05 WORK SEQUENCE

- A. Schedule and execute work to prevent leaks and excessive traffic on completed roof sections. Care should be exercised to provide protection for the interior of the building and to ensure water does not flow beneath any completed sections of the membrane system.
- B. Do not disrupt activities in occupied spaces.

1.06 USE OF THE PREMISES

- A. Before beginning work, the roofing contractor must secure approval from the building owner's

representative for the following:

1. Areas permitted for personnel parking.
 2. Access to the site.
 3. Areas permitted for storage of materials and debris.
 4. Areas permitted for the location of cranes, hoists and chutes for loading and unloading materials to and from the roof.
- B. Interior stairs or elevators may not be used for removing debris or delivering materials, except as authorized by the building superintendent.

1.07 EXISTING CONDITIONS

If discrepancies are discovered between the existing conditions and those noted on the drawings, immediately notify the owner's representative by phone and solicit the manufacturer's approval prior to commencing with the work. Necessary steps shall be taken to make the building watertight until the discrepancies are resolved.

1.08 PRECONSTRUCTION CONFERENCE

- A. A mandatory pre-bid meeting will be held at the job site at 112 S Thompson, Excelsior Springs, MO on July 17th 2018 at 10:00 am. Contact the owner's representative, Larry Murry, at 816-630-9593 if there are any questions.
- B. Prior to bid submittal, the roofing contractor should schedule a job site inspection to observe actual conditions and verify all dimensions on the roof. The job site inspection may occur on the day of the pre-bid meeting or prior to such a meeting. Should access to the roof be necessary before or after the pre-bid meeting, the contractor must contact the owner's representative, Larry Murry, at 816-630-9593 to coordinate an appropriate time.
- C. Bids must be forwarded to the following address no later than 2:00 pm July 31st 2018:

Hall of Waters
City Manager
201 E Broadway
Excelsior Springs, MO 64024
Attn: Larry Murry

- D. Any conditions which are not shown on the shop drawings should be indicated on a copy of the shop drawing and included with bid submittal if necessary to clarify any conditions not shown.

1.09 TEMPORARY FACILITIES AND CONTROLS

- A. Temporary Utilities:
1. Water, power for construction purposes and lighting are available at the site and will be made available to the roofing contractor.
 2. Provide all hoses, valves and connections for water from a source designated by the owner when made available.
 3. When available, electrical power should be extended as required from the source. Provide all trailers, connections and fused disconnects.
- B. Temporary, Sanitary Facilities

Sanitary facilities will not be available at the job site. The roofing contractor shall be responsible for the provision and maintenance of portable toilets or their equal.

C. Building Site:

1. The roofing contractor shall use reasonable care and responsibility to protect the building and site against damages. The contractor shall be responsible for the correction of any damage incurred as a result of the performance of the contract.
2. The roofing contractor shall remove all debris from the job site in a timely and legally acceptable manner so as to not detract from the aesthetics or the functions of the building.

D. Security:

Obey the owner's requirements for personnel identification, inspection and other security measures.

1.10 JOB SITE PROTECTION

- A. The roofing contractor shall adequately protect building, paved areas, service drives, lawn, shrubs, trees, etc. from damage while performing the required work. Provide canvas, boards and sheet metal (properly secured) as necessary for protection and remove protection material at completion. The contractor shall repair or be responsible for costs to repair all property damaged during the roofing application.
- B. During the roofing contractor's performance of the work, the building owner will continue to occupy the existing building. The contractor shall take precautions to prevent the spread of dust and debris, particularly where such material may sift into the building. The roofing contractor shall provide labor and materials to construct, maintain and remove necessary, temporary enclosures to prevent dust or debris in the construction area(s) from entering the remainder of the building.
- C. Do not overload any portion of the building, by either use of or placement of equipment, storage of debris, or storage of materials.
- D. Protect against fire and flame spread. Maintain proper and adequate fire extinguishers.
- E. Take precautions to prevent drains from clogging during the roofing application. Remove debris at the completion of each day's work and clean drains, if required. At completion, test drains to ensure the system is free running and drains are watertight. Remove strainers and plug drains in areas where work is in progress. Install flags or other telltales on plugs. Remove plugs each night and screen drain.
- F. Store moisture susceptible materials above ground and protect with waterproof coverings.
- G. Remove all traces of piled bulk material and return the job site to its original condition upon completion of the work.

1.11 SAFETY

The roofing contractor shall be responsible for all means and methods as they relate to safety and shall comply with all applicable local, state and federal requirements that are safety related. **Safety shall be the responsibility of the roofing contractor.** All related personnel shall be instructed daily to be mindful of the full time requirement to maintain a safe environment for the facility's occupants including staff, visitors, customers and the occurrence of the general public on or near the site.

1.12 WORKMANSHIP

- A. Applicators installing new roof, flashing and related work shall be factory trained and approved by the manufacturer they are representing.
- B. All work shall be of highest quality and in strict accordance with the manufacturer's published specifications and to the building owner's satisfaction.

- C. There shall be a supervisor on the job site at all times while work is in progress.

1.13 QUALITY ASSURANCE

- A. The membrane must be manufactured by the material supplier. Manufacturer's supplying membrane made by others are not acceptable.
- B. Unless otherwise noted in this specification, the roofing contractor must strictly comply with the manufacturer's current specifications and details.
- C. The roofing system must be installed by an applicator authorized and trained by the manufacturer in compliance with shop drawings as approved by the manufacturer. The roofing applicator shall be thoroughly experienced and upon request be able to provide evidence of having at least five (5) years successful experience installing single-ply TPO roofing systems and having installed at least one (1) roofing application or several similar systems of equal or greater size within one year.
- D. Provide adequate number of experienced workmen regularly engaged in this type of work who are skilled in the application techniques of the materials specified. Provide at least one thoroughly trained and experienced superintendent on the job at all times roofing work is in progress.
- E. There shall be no deviations made from this specification or the approved shop drawings without the prior written approval of the specifier. Any deviation from the manufacturer's installation procedures must be supported by a written certification on the manufacturer's letterhead and presented for the specifier's consideration.
- F. Upon completion of the installation, the applicator shall arrange for an inspection to be made by a non-sales technical representative of the membrane manufacturer in order to determine whether or not corrective work will be required before the warranty will be issued. Notify the building owner seventy-two (72) hours prior to the manufacturer's final inspection.

1.14 JOB CONDITIONS, CAUTIONS AND WARNINGS

Refer to Versico's VersiWeld Roofing System specification for General Job Site Considerations.

- A. Safety Data Sheets (SDS) must be on location at all times during the transportation, storage and application of materials.
- B. When positioning membrane sheets, exercise care to locate all field splices away from low spots and out of drain sumps. All field splices should be shingled to prevent bucking of water.
- C. When loading materials onto the roof, the Versico Authorized Roofing Contractor must comply with the requirements of the building owner to prevent overloading and possible disturbance to the building structure.
- D. Proceed with roofing work only when weather conditions are in compliance with the manufacturer's recommended limitations, and when conditions will permit the work to proceed in accordance with the manufacturer's requirements and recommendations.
- E. Proceed with work so new roofing materials are not subject to construction traffic. When necessary, new roof sections shall be protected and inspected upon completion for possible damage.
- F. Provide protection, such as 3/4 inch thick plywood, for all roof areas exposed to traffic during construction. Plywood must be smooth and free of fasteners and splinters.
- G. The surface on which the insulation or roofing membrane is to be applied shall be clean, smooth, dry, and

free of projections or contaminants that would prevent proper application of or be incompatible with the new installation, such as fins, sharp edges, foreign materials, oil and grease.

- H. New roofing shall be complete and weather tight at the end of the work day.
- I. Contaminants such as grease, fats and oils shall not be allowed to come in direct contact with the roofing membrane.

1.15 WARRANTY

- A. Provide manufacturer's 20 year Total System Warranty covering both labor and material with no dollar limitation. The maximum wind speed coverage shall be peak gusts of 72 mph measured at 10 meters above ground level. Certification is required with bid submittal indicating the manufacturer has reviewed and agreed to such wind coverage.
- B. Warranty shall also cover leaks caused by accidental punctures: 16 man-hours per year for 80-mil VersiWeld.
- C. Warranty shall also cover leaks caused by hail:
 - 1. Hail up to 2" diameter hail when 80-mil VersiWeld is installed over Versico Recovery Board, Dens Deck Prime, or Securock.
- D. Pro-rated System Warranties shall not be accepted.
- E. Evidence of the manufacturer's warranty reserve shall be included as part of the project submittals for the specifier's approval.

PART 2 PRODUCTS

2.01 GENERAL

- A. All components of the specified roofing system shall be products of Versico or accepted by Versico as compatible.
- B. All products (including insulation, fasteners, fastening plates, prefabricated accessories and edgings) must be **manufactured and/or supplied** by the roofing system manufacturer and covered by the warranty.

2.02 MEMBRANE

Basis for bid: Furnish Versico VersiWeld 80 mil thick gray reinforced TPO (Thermoplastic Polyolefin) membrane as needed to complete the roofing system. Membrane thickness over the reinforcing scrim (top-ply thickness) shall be nominal 15 mil thick or greater.

Approved manufacturers:

- 1. Versico
- 2. Carlisle SynTec
- 3. Or approved equal (must meet specifications to be considered)

2.03 INSULATION/UNDERLAYMENT

- A. When applicable, insulation shall be installed in multiple layers. The first and second layers of insulation shall be mechanically fastened to the substrate in accordance with the manufacturer's published specifications.
- B. Mechanically fasten base layers insulation shall be Versico Securshield Polyiso Insulation shall be as supplied by Versico. Minimum R-value required is R-25.
- C. Adhere Cover board, Versico 1/2" HD, with Flexible Dash adhesive.
 - 1. **Versico SecurShield Polyisocyanurate**— A foam core insulation board covered on both sides with a coated glass fiber mat facer meeting ASTM C 1289-06, Type II, Class 2, Grade 2 (20 psi) or Grade 3 (25 psi). The product is available in 4' x 8' standard size with a thickness from 1 to 4 inches. 4' x 4' tapered panels are also available.
 - 2. **Versico SecurShield HD Cover Board**— a rigid insulation panel composed of a high-density, closed-cell polyisocyanurate foam core laminated to moisture resistant coated-glass fiber-mat facer for use as a cover board or recover board meeting ASTM 1289-06, Type II, Class 2 (100 psi). Available 1/2" thick 4' x 8' panel weight 11 lbs with an R-value of 2.5.

2.04 FASTENING COMPONENTS

To be used for mechanical attachment of insulation and to provide additional membrane securement:

A. Fasteners, Plates and Bars

- 1. **HPVX Fasteners:** A heavy duty #15 threaded fastener with a #3 phillips drive used for membranre or insulation securement into steel, wood plank or minimum 15/32 inch thick plywood when increased pullout resistance is desired.
- 2. **Pre-Assembled ASAP Fasteners:** A pre-assembled 3" diameter Plastic Plate and # 12 threaded fastener with a #3 drive used for insulation attachment into steel or wood decks. Installed using OMG Fastening Tools.
- 3. **InsulTite Fasteners:** A threaded #12 fastener with #3 phillips drive used for insulation attachment into steel or wood decks.
- 4. **CD-10 Fasteners:** A non-threaded, hammer driven fastener used with structural concrete roof decks rated 3,000 psi or greater.
- 5. **Term Bar Nail-Ins:** A 1-1/4" long expansion anchor with a zinc plated steel drive pin used for fastening the Versico Termination Bar or Seam Fastening Plates to concrete, brick, or block walls.
- 6. **HPVX Plates:** A 2-3/8" diameter metal barbed fastening plate used with Versico HPVX or MP-14-10 Fasteners for membrane securement. This plate can be used for insulation securement.
- 7. **Insulation Fastening Plates:** a nominal 3 inch diameter plastic or metal plate used for insulation attachment.
- 8. **VersiWeld Pressure-Sensitive RUSS™** (Reinforced Universal Securement Strip): a 6" wide, nominal 45-mil thick reinforced TPO membrane with 3" wide Pressure Sensitive Tape laminated along one edge. The

6" wide Pressure-Sensitive RUSS is used horizontally at the base of walls, curbs, etc., in conjunction with 2" diameter Seam Fastening Plates below the TPO deck membrane for additional membrane securement.

- a. **6" wide Pressure-Sensitive RUSS** is used horizontally or vertically at the base of walls, curbs, etc., in conjunction with PiranhaFastening Plates below the TPO deck membrane for additional membrane securement.
- b. **10" wide Pressure-Sensitive RUSS** is for perimeter membrane securement.

B. Insulation Adhesive:

1. **Flexible DASH Adhesive:** A two component insulating urethane adhesive used to attach insulation. Packaging formats include 50 and 15 gallon drums as well as Dual Tanks, Dual Cartridges and 5 gallon Jug formats.
2. **Versico OlyBond 500 BA:** a two-component, construction-grade, low-rise, expanding polyurethane adhesive designed for bonding insulation to various substrates.

2.05 ADHESIVES, CLEANERS AND SEALANTS

All products shall be furnished by Versico and specifically formulated for the intended purpose.

A. CAV-GRIP 3V Low-VOC Aerosol Contact Adhesive/Primer: a low-VOC, methylene chloride-free adhesive that can be used for a variety of applications including: bonding Sure-Weld membrane to various surfaces, enhancing the bond between Versico's VapAir Seal 725TR and various substrates, priming unexposed asphalt prior to applying DASH Adhesive and for adhering VersiWeld/VersiFlex FleeceBACK and VersiWeld TPO membrane to vertical walls. Coverage rate is approximately 2,000 sq. ft. per cylinder as a primer, in a single-sided application and 1,000 sq. ft. per cylinder as an adhesive, in a double-sided application.

B. Cut-Edge Sealant: A white or clear colored sealant used to seal cut edges of reinforced VersiWeld membrane. A coverage rate of approximately 225 - 275 linear feet per squeeze bottle can be achieved when a 1/8" diameter bead is applied.

C. Water Cut-Off Mastic: Used as a mastic to prevent moisture migration at drains, compression terminations and beneath conventional metal edging (at a coverage rate of approximately 10' per tube or 100' per gallon).

D. Universal Single-Ply Sealant: A 100% solids, solvent free, voc free, one part polyether sealant that provides a weather tight seal to a variety of building materials. It is white in color and is used for general caulking such as above termination bars and metal counter flashings and at scuppers.

E. Thermoplastic One-Part Pourable Sealer: A one-part, moisture curing, elastomeric polyether sealant used to fill TPO Molded Pourable Sealant Pockets. Packaged in 4, 2-liter foil pouches inside a reusable plastic bucket. 1 pouch will fill 2 TPO Molded Pourable Sealant Pockets.

F. Weathered Membrane Cleaner: Used to prepare membrane for heat welding that has been exposed to the elements or to remove general construction dirt at an approximate coverage rate of 400 square feet per gallon (one surface).

G. TPO Primer: A solvent-based primer used to prepare the surface of VersiWeld Membrane prior to application of Pressure-Sensitive Coverstrip and TPO Pressure-Sensitive RUSS.

2.06 METAL EDGING AND MEMBRANE TERMINATIONS

- A. **General:** All metal edging s shall be tested and meet ANSI/SPRI ES-1 standards and comply with International Building Code.
- E. **Drip Edge:** a metal fascia/edge system with a 22 or 24 gauge continuous anchor cleat and .032 inch thick aluminum or 24 gauge steel fascia. Metal fascia color shall be as designated by the Owner's Representative.
- F. **Termination Bar:** a 1" wide and .098" thick extruded aluminum bar pre-punched 6" on center; incorporates a sealant ledge to support Lap Sealant and provide increased stability for membrane terminations.

2.07 WALKWAYS

Protective surfacing for roof traffic shall be VersiWeld TPO Walkway Rolls installed per manufacturer's requirements or concrete pavers loose laid over an approved slip sheet (pavers not recommended for slopes greater than 2" in 12").

PART 3 EXECUTION

3.01 GENERAL

- A. Comply with the manufacturer's published instructions for the installation of the membrane roofing system including proper substrate preparation, job site considerations and weather restrictions.
- B. Position sheets to accommodate contours of the roof deck and shingle splices to avoid bucking water.

3.03 INSULATION PLACEMENT AND ATTACHMENT

- A. Install insulation or membrane underlayment over the substrate with boards butted tightly together with no joints or gaps greater than 1/4 inch. Stagger joints horizontally and vertically if multiple layers are provided.
- B. Secure insulation to the substrate with the required mechanical fasteners or insulation adhesive Flexible DASH Adhesive in accordance with the manufacturer's specifications.

3.04 MEMBRANE PLACEMENT AND ATTACHMENT

- A. Position VersiWeld membrane over the acceptable substrate. Fold membrane sheet back onto itself so half the underside of the membrane is exposed.
- B. Apply Bonding Adhesive in accordance with the manufacturer's published instructions, to the exposed underside of the membrane and the corresponding substrate area. Do not apply Bonding Adhesive along the splice edge of the membrane to be hot air welded over the adjoining sheet. Allow the adhesive to dry until it is tacky but will not string or stick to a dry finger touch.
 - 1. Roll the coated membrane into the coated substrate while avoiding wrinkles. Brush down the bonded section of the membrane sheet immediately after rolling the membrane into the adhesive with a soft bristle push broom to achieve maximum contact.
 - 2. Fold back the unbonded half of the sheet and repeat the bonding procedures.
- C. Position adjoining sheets to allow a minimum overlap of 2 inches to provide a minimum 1-1/2" hot air weld.
- D. Continue to install adjoining membrane sheets in the same manner, overlapping edges a minimum of 2 inches and complete the bonding procedures as stated previously.

3.05 MEMBRANE HOT AIR WELDING PROCEDURES

- A. Hot air weld the VersiWeld membrane using an Automatic Hot Air Welding Machine or Hot Air Hand Welder in accordance with the manufacturer's specifications. At all splice intersections, roll the seam with a silicone roller immediately after welder crossed the membrane step-off to ensure a continuous hot air welded seam.

Note: When using 60-mil thick or thicker membrane, all splice intersections shall be overlaid with VersiWeld T-joint covers or non-reinforced flashing.
- B. Probe all seams once the hot air welds have thoroughly cooled (approximately 30 minutes).
- C. Repair all seam deficiencies the same day they are discovered.
- E. Apply Cut Edge Sealant on all cut edges of reinforced membrane (where the scrim reinforcement is exposed) after seam probing is complete. Cut Edge Sealant is not required on vertical splices.

3.06 FLASHING

- A. Flashing of parapets, curbs, expansion joints and other parts of the roof must be performed using VersiWeld reinforced membrane. VersiWeld non-reinforced membrane can be used for flashing pipe penetrations, Sealant Pockets, and scuppers, as well as inside and outside corners, when the use of prefabricated accessories is not feasible.
- B. Follow manufacturer's typical flashing procedures for all wall, curb, and penetration flashing including metal edging/coping and roof drain applications.

3.07 WALKWAYS

- A. Install walkways at all traffic concentration points (such as roof hatches, access doors, rooftop ladders, etc.) and all locations as identified on the specifier's drawing.

3.08 DAILY SEAL

- A. On phased roofing, when the completion of flashings and terminations is not achieved by the end of the work day, a daily seal must be performed to temporarily close the membrane to prevent water infiltration.
- B. Complete an acceptable membrane seal in accordance with the manufacturer's requirements.

3.09 CLEAN UP

- A. Perform daily clean up to collect all wrappings, empty containers, paper, and other debris from the project site. Upon completion, all debris must be disposed of in a legally acceptable manner.
- B. Prior to the manufacturer's inspection for warranty, the applicator must perform a pre-inspection to review all work and to verify all flashing has been completed as well as the application of all caulking.

END OF SPECIFICATION

Bank Building Excelsior Springs, MO Roofing Project

PART 1 GENERAL

1.01 DESCRIPTION

- A. The Bank Building is located at 218 South Street in Excelsior Springs, MO. Larry Murry, Project Manager/Coordinator, is the Owner's Representative and may be contacted regarding any questions or for a pre-bid job site inspection, phone 816-630-9593.
- B. The project consists of installing Versico's VersiWeld (TPO) Adhered Roofing System as outlined below:

Apply the VersiWeld Adhered Roofing System in conjunction with Versico ISO mechanically fastened to deck and Versico 1/2" HD ISO installed in Flexible Dash adhesive after tear off of the existing roof to expose the wood deck for verification of suitable substrate as specified in this specification.

1.02 EXTENT OF WORK

- A. Provide all labor, material, tools, equipment, and supervision necessary to complete the installation of the VersiWeld reinforced TPO (Thermoplastic Polyolefin) reinforced membrane Adhered Roofing System including flashings and insulation as specified herein and as indicated on the drawings in accordance with the manufacturer's most current specifications and details.
- B. The roofing contractor shall be fully knowledgeable of all requirements of the contract documents and shall make themselves aware of all job site conditions that will affect their work.
- C. The roofing contractor shall confirm all given information and advise the building owner, prior to bid, of any conflicts that will affect their cost proposal.

- D. Any contractor who intends to submit a bid using a roofing system other than the approved manufacturer must submit for pre-qualification in writing fourteen (14) days prior to the bid date. Any contractor who fails to submit all information as requested will be subject to rejection. Bids stating "as per plans and specs" will be unacceptable.

1.03 SUBMITTALS

- A. Prior to starting work, the roofing contractor must submit the following:
1. Shop drawings showing layout, details of construction and identification of materials.
 2. A sample of the manufacturer's Membrane System Warranty.
 3. Submit a letter of certification from the manufacturer which certifies the roofing contractor is authorized to install the manufacturer's roofing system and lists foremen who have received training from the manufacturer along with the dates training was received.
 4. Certification from the membrane manufacturer indicating the membrane thickness over the reinforcing scrim (top ply membrane thickness) is nominal 15 mil or thicker.
 5. Certification of the manufacturer's warranty reserve.
- B. Upon completion of the installed work, submit copies of the manufacturer's final inspection to the specifier prior to the issuance of the manufacturer's warranty.

1.04 PRODUCT DELIVERY, STORAGE AND HANDLING

- A. Deliver materials to the job site in the manufacturer's original, unopened containers or wrappings with the manufacturer's name, brand name and installation instructions intact and legible. Deliver in sufficient quantity to permit work to continue without interruption.
- B. Comply with the manufacturer's written instructions for proper material storage.
1. Store VersiWeld membrane in the original undisturbed plastic wrap in a cool, shaded area. VersiWeld membrane that has been exposed to the elements for approximately 7 days must be prepared with Weathered Membrane Cleaner prior to hot air welding.
 2. Store curable materials (adhesives and sealants) between 60°F and 80°F in dry areas protected from water and direct sunlight. If exposed to lower temperature, restore to 60°F minimum temperature before using.
 3. Store materials containing solvents in dry, well ventilated spaces with proper fire and safety precautions. Keep lids on tight. Use before expiration of their shelf life.
- C. Insulation must be on pallets, off the ground and tightly covered with waterproof materials.
- D. Any materials which are found to be damaged shall be removed and replaced at the applicator's expense.

1.05 WORK SEQUENCE

- A. Schedule and execute work to prevent leaks and excessive traffic on completed roof sections. Care should be exercised to provide protection for the interior of the building and to ensure water does not flow beneath any completed sections of the membrane system.
- B. Do not disrupt activities in occupied spaces.

1.06 USE OF THE PREMISES

- A. Before beginning work, the roofing contractor must secure approval from the building owner's

representative for the following:

1. Areas permitted for personnel parking.
 2. Access to the site.
 3. Areas permitted for storage of materials and debris.
 4. Areas permitted for the location of cranes, hoists and chutes for loading and unloading materials to and from the roof.
- B. Interior stairs or elevators may not be used for removing debris or delivering materials, except as authorized by the building superintendent.

1.07 EXISTING CONDITIONS

If discrepancies are discovered between the existing conditions and those noted on the drawings, immediately notify the owner's representative by phone and solicit the manufacturer's approval prior to commencing with the work. Necessary steps shall be taken to make the building watertight until the discrepancies are resolved.

1.08 PRECONSTRUCTION CONFERENCE

- A. A mandatory pre-bid meeting will be held at the job site at 218 South Street, Excelsior Springs, MO on July 17th 2018 at 10:00 am. Contact the owner's representative, Larry Murry, at 816-630-9593 if there are any questions.
- B. Prior to bid submittal, the roofing contractor should schedule a job site inspection to observe actual conditions and verify all dimensions on the roof. The job site inspection may occur on the day of the pre-bid meeting or prior to such a meeting. Should access to the roof be necessary before or after the pre-bid meeting, the contractor must contact the owner's representative, Larry Murry, at 816-630-9593 to coordinate an appropriate time.
- C. Bids must be forwarded to the following address no later than 2:00 pm July 31st 2018:

Hall of Waters
City Manager
201 E Broadway
Excelsior Springs, MO 64024
Attn: Larry Murry

- D. Any conditions which are not shown on the shop drawings should be indicated on a copy of the shop drawing and included with bid submittal if necessary to clarify any conditions not shown.

1.09 TEMPORARY FACILITIES AND CONTROLS

- A. Temporary Utilities:
1. Water, power for construction purposes and lighting are available at the site and will be made available to the roofing contractor.
 2. Provide all hoses, valves and connections for water from a source designated by the owner when made available.
 3. When available, electrical power should be extended as required from the source. Provide all trailers, connections and fused disconnects.
- B. Temporary, Sanitary Facilities

Sanitary facilities will not be available at the job site. The roofing contractor shall be responsible for the provision and maintenance of portable toilets or their equal.

C. Building Site:

1. The roofing contractor shall use reasonable care and responsibility to protect the building and site against damages. The contractor shall be responsible for the correction of any damage incurred as a result of the performance of the contract.
2. The roofing contractor shall remove all debris from the job site in a timely and legally acceptable manner so as to not detract from the aesthetics or the functions of the building.

D. Security:

Obey the owner's requirements for personnel identification, inspection and other security measures.

1.10 JOB SITE PROTECTION

- A. The roofing contractor shall adequately protect building, paved areas, service drives, lawn, shrubs, trees, etc. from damage while performing the required work. Provide canvas, boards and sheet metal (properly secured) as necessary for protection and remove protection material at completion. The contractor shall repair or be responsible for costs to repair all property damaged during the roofing application.
- B. During the roofing contractor's performance of the work, the building owner will continue to occupy the existing building. The contractor shall take precautions to prevent the spread of dust and debris, particularly where such material may sift into the building. The roofing contractor shall provide labor and materials to construct, maintain and remove necessary, temporary enclosures to prevent dust or debris in the construction area(s) from entering the remainder of the building.
- C. Do not overload any portion of the building, by either use of or placement of equipment, storage of debris, or storage of materials.
- D. Protect against fire and flame spread. Maintain proper and adequate fire extinguishers.
- E. Take precautions to prevent drains from clogging during the roofing application. Remove debris at the completion of each day's work and clean drains, if required. At completion, test drains to ensure the system is free running and drains are watertight. Remove strainers and plug drains in areas where work is in progress. Install flags or other telltales on plugs. Remove plugs each night and screen drain.
- F. Store moisture susceptible materials above ground and protect with waterproof coverings.
- G. Remove all traces of piled bulk material and return the job site to its original condition upon completion of the work.

1.11 SAFETY

The roofing contractor shall be responsible for all means and methods as they relate to safety and shall comply with all applicable local, state and federal requirements that are safety related. **Safety shall be the responsibility of the roofing contractor.** All related personnel shall be instructed daily to be mindful of the full time requirement to maintain a safe environment for the facility's occupants including staff, visitors, customers and the occurrence of the general public on or near the site.

1.12 WORKMANSHIP

- A. Applicators installing new roof, flashing and related work shall be factory trained and approved by the manufacturer they are representing.
- B. All work shall be of highest quality and in strict accordance with the manufacturer's published specifications and to the building owner's satisfaction.

- C. There shall be a supervisor on the job site at all times while work is in progress.

1.13 QUALITY ASSURANCE

- A. The membrane must be manufactured by the material supplier. Manufacturer's supplying membrane made by others are not acceptable.
- B. Unless otherwise noted in this specification, the roofing contractor must strictly comply with the manufacturer's current specifications and details.
- C. The roofing system must be installed by an applicator authorized and trained by the manufacturer in compliance with shop drawings as approved by the manufacturer. The roofing applicator shall be thoroughly experienced and upon request be able to provide evidence of having at least five (5) years successful experience installing single-ply TPO roofing systems and having installed at least one (1) roofing application or several similar systems of equal or greater size within one year.
- D. Provide adequate number of experienced workmen regularly engaged in this type of work who are skilled in the application techniques of the materials specified. Provide at least one thoroughly trained and experienced superintendent on the job at all times roofing work is in progress.
- E. There shall be no deviations made from this specification or the approved shop drawings without the prior written approval of the specifier. Any deviation from the manufacturer's installation procedures must be supported by a written certification on the manufacturer's letterhead and presented for the specifier's consideration.
- F. Upon completion of the installation, the applicator shall arrange for an inspection to be made by a non-sales technical representative of the membrane manufacturer in order to determine whether or not corrective work will be required before the warranty will be issued. Notify the building owner seventy-two (72) hours prior to the manufacturer's final inspection.

1.14 JOB CONDITIONS, CAUTIONS AND WARNINGS

Refer to Versico's VersiWeld Roofing System specification for General Job Site Considerations.

- A. Safety Data Sheets (SDS) must be on location at all times during the transportation, storage and application of materials.
- B. When positioning membrane sheets, exercise care to locate all field splices away from low spots and out of drain sumps. All field splices should be shingled to prevent bucking of water.
- C. When loading materials onto the roof, the Versico Authorized Roofing Contractor must comply with the requirements of the building owner to prevent overloading and possible disturbance to the building structure.
- D. Proceed with roofing work only when weather conditions are in compliance with the manufacturer's recommended limitations, and when conditions will permit the work to proceed in accordance with the manufacturer's requirements and recommendations.
- E. Proceed with work so new roofing materials are not subject to construction traffic. When necessary, new roof sections shall be protected and inspected upon completion for possible damage.
- F. Provide protection, such as 3/4 inch thick plywood, for all roof areas exposed to traffic during construction. Plywood must be smooth and free of fasteners and splinters.
- G. The surface on which the insulation or roofing membrane is to be applied shall be clean, smooth, dry, and

free of projections or contaminants that would prevent proper application of or be incompatible with the new installation, such as fins, sharp edges, foreign materials, oil and grease.

- H. New roofing shall be complete and weather tight at the end of the work day.
- I. Contaminants such as grease, fats and oils shall not be allowed to come in direct contact with the roofing membrane.

1.15 WARRANTY

- A. Provide manufacturer's 20 year Total System Warranty covering both labor and material with no dollar limitation. The maximum wind speed coverage shall be peak gusts of 72 mph measured at 10 meters above ground level. Certification is required with bid submittal indicating the manufacturer has reviewed and agreed to such wind coverage.
- B. Warranty shall also cover leaks caused by accidental punctures: 16 man-hours per year for 80-mil VersiWeld.
- C. Warranty shall also cover leaks caused by hail:
 - 1. Hail up to 2" diameter hail when 80-mil VersiWeld is installed over Versico Recovery Board, Dens Deck Prime, or Securock.
- D. Pro-rated System Warranties shall not be accepted.
- E. Evidence of the manufacturer's warranty reserve shall be included as part of the project submittals for the specifier's approval.

PART 2 PRODUCTS

2.01 GENERAL

- A. All components of the specified roofing system shall be products of Versico or accepted by Versico as compatible.
- B. All products (including insulation, fasteners, fastening plates, prefabricated accessories and edgings) must be **manufactured and/or supplied** by the roofing system manufacturer and covered by the warranty.

2.02 MEMBRANE

Basis for bid: Furnish Versico VersiWeld 80 mil thick gray reinforced TPO (Thermoplastic Polyolefin) membrane as needed to complete the roofing system. Membrane thickness over the reinforcing scrim (top-ply thickness) shall be nominal 15 mil thick or greater.

Approved manufacturers:

- 1. Versico
- 2. Carlisle SynTec
- 3. Or approved equal(must meet specifications to be considered)

2.03 INSULATION/UNDERLAYMENT

- A. When applicable, insulation shall be installed in multiple layers. The first and second layers of insulation shall be mechanically fastened to the substrate in accordance with the manufacturer's published specifications.
- B. Mechanically fasten base layers insulation shall be Versico Securshield Polyiso Insulation shall be as supplied by Versico. Minimum R-value required is R-25.
- C. Adhere Cover board, Versico 1/2" HD, with Flexible Dash adhesive.
 - 1. **Versico SecurShield Polyisocyanurate**— A foam core insulation board covered on both sides with a coated glass fiber mat facer meeting ASTM C 1289-06, Type II, Class 2, Grade 2 (20 psi) or Grade 3 (25 psi). The product is available in 4' x 8' standard size with a thickness from 1 to 4 inches. 4' x 4' tapered panels are also available.
 - 2. **Versico SecurShield HD Cover Board**— a rigid insulation panel composed of a high-density, closed-cell polyisocyanurate foam core laminated to moisture resistant coated-glass fiber-mat facer for use as a cover board or recover board meeting ASTM 1289-06, Type II, Class 2 (100 psi). Available 1/2" thick 4' x 8' panel weight 11 lbs with an R-value of 2.5.

2.04 FASTENING COMPONENTS

To be used for mechanical attachment of insulation and to provide additional membrane securement:

A. Fasteners, Plates and Bars

- 1. **HPVX Fasteners:** A heavy duty #15 threaded fastener with a #3 phillips drive used for membranre or insulation securement into steel, wood plank or minimum 15/32 inch thick plywood when increased pullout resistance is desired.
- 2. **Pre-Assembled ASAP Fasteners:** A pre-assembled 3" diameter Plastic Plate and # 12 threaded fastener with a #3 drive used for insulation attachment into steel or wood decks. Installed using OMG Fastening Tools.
- 3. **InsulTite Fasteners:** A threaded #12 fastener with #3 phillips drive used for insulation attachment into steel or wood decks.
- 4. **CD-10 Fasteners:** A non-threaded, hammer driven fastener used with structural concrete roof decks rated 3,000 psi or greater.
- 5. **Term Bar Nail-Ins:** A 1-1/4" long expansion anchor with a zinc plated steel drive pin used for fastening the Versico Termination Bar or Seam Fastening Plates to concrete, brick, or block walls.
- 6. **HPVX Plates:** A 2-3/8" diameter metal barbed fastening plate used with Versico HPVX or MP-14-10 Fasteners for membrane securement. This plate can be used for insulation securement.
- 7. **Insulation Fastening Plates:** a nominal 3 inch diameter plastic or metal plate used for insulation attachment.
- 8. **VersiWeld Pressure-Sensitive RUSS™** (Reinforced Universal Securement Strip): a 6" wide, nominal 45-mil thick reinforced TPO membrane with 3" wide Pressure Sensetive Tape laminated along one edge. The

6" wide Pressure-Sensitive RUSS is used horizontally at the base of walls, curbs, etc., in conjunction with 2" diameter Seam Fastening Plates below the TPO deck membrane for additional membrane securement.

- a. **6" wide Pressure-Sensitive RUSS** is used horizontally or vertically at the base of walls, curbs, etc., in conjunction with PiranhaFastening Plates below the TPO deck membrane for additional membrane securement.
- b. **10" wide Pressure-Sensitive RUSS** is for perimeter membrane securement.

B. Insulation Adhesive:

1. **Flexible DASH Adhesive:** A two component insulating urethane adhesive used to attach insulation. Packaging formats include 50 and 15 gallon drums as well as Dual Tanks, Dual Cartridges and 5 gallon Jug formats.
2. **Versico OlyBond 500 BA:** a two-component, construction-grade, low-rise, expanding polyurethane adhesive designed for bonding insulation to various substrates.

2.05 ADHESIVES, CLEANERS AND SEALANTS

All products shall be furnished by Versico and specifically formulated for the intended purpose.

- A. CAV-GRIP 3V Low-VOC Aerosol Contact Adhesive/Primer:** a low-VOC, methylene chloride-free adhesive that can be used for a variety of applications including: bonding Sure-Weld membrane to various surfaces, enhancing the bond between Versico's VapAir Seal 725TR and various substrates, priming unexposed asphalt prior to applying DASH Adhesive and for adhering VersiWeld/VersiFlex FleeceBACK and VersiWeld TPO membrane to vertical walls. Coverage rate is approximately 2,000 sq. ft. per cylinder as a primer, in a single-sided application and 1,000 sq. ft. per cylinder as an adhesive, in a double-sided application.
- B. Cut-Edge Sealant:** A white or clear colored sealant used to seal cut edges of reinforced VersiWeld membrane. A coverage rate of approximately 225 - 275 linear feet per squeeze bottle can be achieved when a 1/8" diameter bead is applied.
- C. Water Cut-Off Mastic:** Used as a mastic to prevent moisture migration at drains, compression terminations and beneath conventional metal edging (at a coverage rate of approximately 10' per tube or 100' per gallon).
- D. Universal Single-Ply Sealant:** A 100% solids, solvent free, voc free, one part polyether sealant that provides a weather tight seal to a variety of building materials. It is white in color and is used for general caulking such as above termination bars and metal counter flashings and at scuppers.
- E. Thermoplastic One-Part Pourable Sealer:** A one-part, moisture curing, elastomeric polyether sealant used to fill TPO Molded Pourable Sealant Pockets. Packaged in 4, 2-liter foil pouches inside a reusable plastic bucket. 1 pouch will fill 2 TPO Molded Pourable Sealant Pockets.
- F. Weathered Membrane Cleaner:** Used to prepare membrane for heat welding that has been exposed to the elements or to remove general construction dirt at an approximate coverage rate of 400 square feet per gallon (one surface).
- G. TPO Primer:** A solvent-based primer used to prepare the surface of VersiWeld Membrane prior to application of Pressure-Sensitive Coverstrip and TPO Pressure-Sensitive RUSS.

2.06 METAL EDGING AND MEMBRANE TERMINATIONS

- A. **General:** All metal edging s shall be tested and meet ANSI/SPRI ES-1 standards and comply with International Building Code.
- E. **Drip Edge:** a metal fascia/edge system with a 22 or 24 gauge continuous anchor cleat and .032 inch thick aluminum or 24 gauge steel fascia. Metal fascia color shall be as designated by the Owner's Representative.
- F. **Termination Bar:** a 1" wide and .098" thick extruded aluminum bar pre-punched 6" on center; incorporates a sealant ledge to support Lap Sealant and provide increased stability for membrane terminations.

2.07 WALKWAYS

Protective surfacing for roof traffic shall be VersiWeld TPO Walkway Rolls installed per manufacturer's requirements or concrete pavers loose laid over an approved slip sheet (pavers not recommended for slopes greater than 2" in 12").

PART 3 EXECUTION

3.01 GENERAL

- A. Comply with the manufacturer's published instructions for the installation of the membrane roofing system including proper substrate preparation, job site considerations and weather restrictions.
- B. Position sheets to accommodate contours of the roof deck and shingle splices to avoid bucking water.

3.03 INSULATION PLACEMENT AND ATTACHMENT

- A. Install insulation or membrane underlayment over the substrate with boards butted tightly together with no joints or gaps greater than 1/4 inch. Stagger joints horizontally and vertically if multiple layers are provided.
- B. Secure insulation to the substrate with the required mechanical fasteners or insulation adhesive Flexible DASH Adhesive in accordance with the manufacturer's specifications.

3.04 MEMBRANE PLACEMENT AND ATTACHMENT

- A. Position VersiWeld membrane over the acceptable substrate. Fold membrane sheet back onto itself so half the underside of the membrane is exposed.
- B. Apply Bonding Adhesive in accordance with the manufacturer's published instructions, to the exposed underside of the membrane and the corresponding substrate area. Do not apply Bonding Adhesive along the splice edge of the membrane to be hot air welded over the adjoining sheet. Allow the adhesive to dry until it is tacky but will not string or stick to a dry finger touch.
 - 1. Roll the coated membrane into the coated substrate while avoiding wrinkles. Brush down the bonded section of the membrane sheet immediately after rolling the membrane into the adhesive with a soft bristle push broom to achieve maximum contact.
 - 2. Fold back the unbonded half of the sheet and repeat the bonding procedures.
- C. Position adjoining sheets to allow a minimum overlap of 2 inches to provide a minimum 1-1/2" hot air weld.
- D. Continue to install adjoining membrane sheets in the same manner, overlapping edges a minimum of 2 inches and complete the bonding procedures as stated previously.

3.05 MEMBRANE HOT AIR WELDING PROCEDURES

- A. Hot air weld the VersiWeld membrane using an Automatic Hot Air Welding Machine or Hot Air Hand Welder in accordance with the manufacturer's specifications. At all splice intersections, roll the seam with a silicone roller immediately after welder crossed the membrane step-off to ensure a continuous hot air welded seam.

Note: When using 60-mil thick or thicker membrane, all splice intersections shall be overlaid with VersiWeld T-joint covers or non-reinforced flashing.
- B. Probe all seams once the hot air welds have thoroughly cooled (approximately 30 minutes).
- C. Repair all seam deficiencies the same day they are discovered.
- E. Apply Cut Edge Sealant on all cut edges of reinforced membrane (where the scrim reinforcement is exposed) after seam probing is complete. Cut Edge Sealant is not required on vertical splices.

3.06 FLASHING

- A. Flashing of parapets, curbs, expansion joints and other parts of the roof must be performed using VersiWeld reinforced membrane. VersiWeld non-reinforced membrane can be used for flashing pipe penetrations, Sealant Pockets, and scuppers, as well as inside and outside corners, when the use of prefabricated accessories is not feasible.
- B. Follow manufacturer's typical flashing procedures for all wall, curb, and penetration flashing including metal edging/coping and roof drain applications.

3.07 WALKWAYS

- A. Install walkways at all traffic concentration points (such as roof hatches, access doors, rooftop ladders, etc.) and all locations as identified on the specifier's drawing.

3.08 DAILY SEAL

- A. On phased roofing, when the completion of flashings and terminations is not achieved by the end of the work day, a daily seal must be performed to temporarily close the membrane to prevent water infiltration.
- B. Complete an acceptable membrane seal in accordance with the manufacturer's requirements.

3.09 CLEAN UP

- A. Perform daily clean up to collect all wrappings, empty containers, paper, and other debris from the project site. Upon completion, all debris must be disposed of in a legally acceptable manner.
- B. Prior to the manufacturer's inspection for warranty, the applicator must perform a pre-inspection to review all work and to verify all flashing has been completed as well as the application of all caulking.

END OF SPECIFICATION

Addendum #1

In addition to all work specified in Base Bid Specifications:

Clarification: Work will be completed in 60 days from Notice to Proceed. \$500 liquidated damages to be enforced after that.

At East Roof of City Hall add small roof along west wall to comply with Manufacturer's Warranty Requirements.

At West Roof of City Hall add small roof along west wall to comply with Manufacturer's Warranty Requirements.

At Community Center remove existing Bell Tile and Metal coping cap. Dispose of off site the metal caps and save for owner the Bell Tile Copping. Install new wood nailers and 24 gauge Kynar coated Sheet Metal Copping cap in accordance with latest SMACNA design and details.

At Community Center: After removal and replacement of deteriorated or missing wood decking, furnish and install a tapered Insulation system consisting of ½" Secureock mechanically attached to deck. Furnish and install tapered EPS insulation with ½" start, 1/8" per 1' slope 1.5# density, starting at gutter and running back to the east wall. Set in Low rise adhesive. Furnish and install coverboard of ½" Hi Density 100 PSI polyisocyanurate set in low rise adhesive to EPS tapered insulation . Fully adhere new membrane to cover board.

New 2X6 wood nailer to be installed at gutter edge to act as curb for tapered system. Seal to gutter with manufacturer's standard detail required for warranty.

Add new 2.5X3' roof hatch and access ladder at existing location in accordance with latest OSHA recommendations.

At Bank Building remove existing Bell Tile and Metal coping cap. Dispose of off site the metal caps and save for owner the Bell Tile Copping. Install new wood nailers and 24 gauge Kynar coated Sheet Metal Copping cap in accordance with latest SMACNA design and details.

TABULATION SHEET

DEPARTMENT: Community Development

DATE: July 31, 2018

TABULATED BY: Molly McGovern

SHEET 1 OF 2

[illegible]

TABULATION SHEET

DATE: 7-31-18

TABULATED BY: Molly McGovern

SHEET 1 OF 2

[illegible]



Police

Capital Improvements Authority Meeting - 9/10/2018

To: Authority Members
From: Clinton D. Reno, Chief of Police
Date: 8/28/2018
RE: Approval: Funding Request for MARRS Radio Tower

At the March 12, 2018 Capital Improvement Authority meeting, the Police Department presented a request to utilize \$500,000.00 of Capital Improvement money to fund 50% of our MARRS radio project, which was approved. The Public Safety Sales Tax Oversight Committee also approved the other 50%. The \$1 million request was then approved by the City Council on March 19th, 2018.

The total amount of the project included a 10% contingency because we knew that the one unknown in this project was our tower situation. We believed our tower structure would have to be structurally improved to hold additional equipment and antennas, but we didn't know to what extent. After starting the project, the engineering report on the tower revealed that our tower was substantially inadequate and not even capable of being improved enough to hold the necessary equipment. Apparently, when it was originally built in 2001, it was sized only to hold the minimum equipment needed for our radio improvement project occurring at that time. Over the years, some additional equipment has been added to the existing tower and it is currently overloaded, and at risk of failure. Our only viable option at this point is to add a new tower near the existing Siloam site that would be sized appropriately for the new MARRS equipment, and provide for future growth. We would also remove some equipment from the existing tower and move it to the new tower to bring our existing tower into safety compliance.

We have been working with Motorola and our consultant, Tusa Consulting, to arrive at what we believe is the best possible price to add a new 180' tower at the Siloam site. We will be able to use the existing equipment building and generator at the base of the tower site so we can avoid those expenses. The negotiated price for the new tower is \$199,853.00. This includes all construction and installation, with the exception of new chain-link fencing and gravel work that will be needed to expand the current compound perimeter to include the new tower footprint.

After discussions with the City Manager and Director of Administrative Services, we are asking the Capital Improvement Authority to approve an additional \$100,000.00, or 50% of the tower expense, for our MARRS radio project. On September 18th, 2018, we will be making a similar request to the Public Safety Sales Tax Oversight Committee to fund the other \$100,000.00 of the tower project. We intend to leave the current contingency funds in place for any further unexpected costs, such as the fencing and gravel work at the site, however, any funds remaining at the end of the project will be returned to the Capital Improvement fund.

We respectfully request and are seeking approval from the Capital Improvement Authority to allocate up to \$100,000.00 for the construction of the new MARRS radio tower as per the attached change order proposal from Motorola. As with any such project, a final approval will be necessary from the City Council.

Thank you for your consideration and police department staff will be at the meeting to answer any further questions you may have.

Clinton D. Reno, Chief of Police

ATTACHMENTS:

Description	Type	Upload Date
Proposed Change Order	Backup Material	9/6/2018

Change Order No. 001

Date: 09/05/2018

Project Name: Excelsior Springs, MO

Customer Name: City of Excelsior Springs, MO

Customer Project Mgr: Lt. Larry Tarrant

The purpose of this Change Order is to: *(highlight the key reasons for this Change Order)*

To add the following to Motorola Solutions' scope of work:

Provide and install (1) Sabre 180 ft. self-supporting tower, model no. S3TL, designed with the capacity and capability as per the attached document from Sabre Industries. Includes foundation (per Sabre's design), grounding per R56 standards, shipping/off-loading, and appropriate drawings/documentation.

Contract # PO # 004829

Contract Date: 3/19/2018

In accordance with the terms and conditions of the contract identified above between The City of Excelsior Springs, MO and Motorola Solutions, Inc., the following changes are approved:

Contract Price Adjustments

Original Contract Value:	\$ 901,095.95
Previous Change Order amounts for Change Order numbers <input type="text" value="na"/> through <input type="text" value="na"/>	\$ 0.00
This Change Order:	\$ 199,853.00
New Contract Value:	\$ 1,100,948.95

Completion Date Adjustments

Original Completion Date:	12/31/18
Current Completion Date prior to this Change Order:	12/31/18
New Completion Date:	08/31/19

Changes in Equipment: *(additions, deletions or modifications)* **Include attachments if needed**

(1) Sabre 180 ft. self-supporting tower, model no. S3TL, with foundation, grounding, antenna mounts, as per attached.

Changes in Services: *(additions, deletions or modifications)* **Include attachments if needed**

To include the installation of the tower foundation, the erection of the tower, grounding work, and necessary documentation. A&E services are included, including standard NEPA (National Environmental Policy Act) and SHPO (State Historical Preservation) fees, but potential THPO (Tribal Historic Preservation) costs are not, as those cannot be determined at this time.

Schedule Changes: *(describe change or N/A)*

Extend expected completion date to 08/31/2019.

Pricing Changes: *(describe change or N/A)*

Increase contract amount by \$199,853.00 to \$1,100,948.95.

Note: This does not include cost for Years 2 – 6 Life Cycle Support Plan (a purchase order has not yet been issued for the Life Cycle Support Plan).

Customer Responsibilities: *(describe change or N/A)*

Customer responsible for any landscaping improvements needed prior to construction or after construction, including the extension of the compound fence, grass seeding, weed mats and gravel, and any tree trimming or removal. Potential THPO (Tribal Historic Preservation) costs are yet to be determined, if necessary.

Payment Schedule for this Change Order:

(describe new payment terms applicable to this change order)

Payment schedule for this change order (follows contract payment schedule):

25% upon change order execution:	\$49,963.25
25% upon shipment of the tower:	\$49,963.25
25% upon tower installation:	\$49,963.25
15% upon Coverage ATP completion:	\$29,977.95
10% upon Final Acceptance:	\$19,985.30

Unless amended above, all other terms and conditions of the Contract shall remain in full force. If there are any inconsistencies between the provisions of this Change Order and the provisions of the Contract, the provisions of this Change Order will prevail.

IN WITNESS WHEREOF the parties have executed this Change Order as of the last date signed below.

Motorola Solutions, Inc.

Customer

By: _____

By: _____

Printed Name: _____

Printed Name: _____

Title: _____

Title: _____

Date: _____

Date: _____

Reviewed by:



Motorola Solutions Project Manager

Date: 09/05/18